



FARDAMENTO
2026



NEW
BERYL

PG.13

2026 COLLECTION

WELCOME TO ROLYWRK CATALOGUE_

DISCOVER OUR SELECTION OF PREMIUM
WORKWEAR AND FOOTWEAR: DURABILITY,
COMFORT AND STYLE IN THE WORK ENVIRONMENT.
FROM WORK UNIFORMS TO ACCESSORIES,
YOU'LL FIND THE PERFECT SOLUTION FOR EVERY
INDUSTRY AND JOB. EXPLORE OUR COLLECTIONS
AND GEAR UP WITH ROLYWRK.





CONTENTS_

8_	FOOTWEAR.	44_	HIGH
VISIBILITY.	74_	INDUSTRY.	120_
SANITARY	&	AESTHETICS.	
134_	FOOD	INDUSTRY.	146_
HORECA.	180_	BASICS.	232_
ACCESSORIES.	244_	INDEX.	

WRK FOOT _WEAR









SECURITY SUSTAINABILITY CONFORT AND DESIGN_

FROM OUR BEGINNINGS, WE HAVE FOCUSED ON DESIGNING A WIDE RANGE OF GARMENTS THAT MEET THE HIGHEST QUALITY STANDARDS, OFFERING THE PERFECT COMBINATION OF STYLE AND FUNCTIONALITY FOR THE WORKWEAR WORLD.

WE ARE CONSTANTLY EXPLORING NEW TRENDS AND TEXTILE TECHNOLOGIES TO ENSURE THAT OUR PRODUCTS ADAPT TO THE CHANGING NEEDS OF THE WORKING ENVIRONMENT. DISCOVER ALL OUR COLLECTIONS WHERE YOU WILL FIND HIGH QUALITY SOLUTIONS FOR ANY WORKING ENVIRONMENT.

**THE NEW WORK FOOTWEAR
COLLECTION BY ROLY WRK OFFERS
THE HIGHEST SAFETY STANDARDS
IN THE INDUSTRY, MODERN DESIGN,
AND GREAT COMFORT. WITH ITS
VARIOUS OPTIONS, IT ADAPTS TO
THE NEEDS OF ANY ACTIVITY. THE
BEST CHOICE TO COMPLETE YOUR
WORK GEAR.**



01_
**FOOT
_WEAR**

FOOTWEAR CERTIFICATION_

<p>8397 BERYL</p>  <p>PG. 12 S1PS</p>	<p>8392 ONYX</p>  <p>PG. 14 S1PS</p>	<p>8385 VITINJA</p>  <p>PG. 16 S1PS</p>
<p>8395 RUBY</p>  <p>PG. 18 S1PS</p>	<p>8394 GARNET</p>  <p>PG. 18 S3S</p>	<p>8382 ULMUS</p>  <p>PG. 20 S3S</p>
<p>8383 CERYSON</p>  <p>PG. 22 S3S</p>	<p>8380 KERCUS</p>  <p>PG. 24 S3S</p>	<p>8381 GISKAN</p>  <p>PG. 26 S3S</p>
<p>8384 NOBOA</p>  <p>PG. 28 S3S</p>	<p>8388 BRAX</p>  <p>PG. 30 S3S</p>	<p>8389 IRON</p>  <p>PG. 32 S3S</p>
<p>8390 ROCK</p>  <p>PG. 34 S7S</p>	<p>8391 LUA</p>  <p>PG. 36 S7S</p>	<p>8387 PEARL</p>  <p>PG. 38 S2</p>
<p>8386 SALT</p>  <p>PG. 40 S2</p>	<p>8393 OPAL</p>  <p>PG. 40 O1SR</p>	<p>8396 BASALT</p>  <p>PG. 42 O1SR</p>

EN ISO 20345:2022+A1:2024 EN ISO 20347:2022

The **UNE-EN ISO 20345:2022** standard specifies the essential requirements for safety footwear and work footwear, with the aim of ensuring the protection of workers and promoting a safe working environment. This regulation covers criteria such as design, resistance, flexibility, impermeability, anti-slip capacity and thickness, as well as other aspects related to materials and ergonomics.



NEW

BERYL

SPORTS-STYLE WORK FOOTWEAR

8397 BERYL



S1PS

Work shoe with next-generation textile fabric and a sporty design.

- Toecap: Fiberglass, 200 joules.
- Anti-perforation insole: Interlaced textile fibres (PS), 3 mm.
- Sole: Dual-density polyurethane
- Closure: Laces
- Reinforcement: Toe and heel
- Upper fabric: Black NET + Black Nubuck Microfiber + Reflective printing
- Lining: Black Neoprene with Back Reinforcement

35 - 36 - 37 - 38 - 39 - 40 - 41 - 42 - 43 - 44 - 45 - 46 - 47 - 48 - 49 - 50

Black NET + Black Nubuck Microfiber + Reflective printing

CE certificate according to standards:
EN ISO 20345:2022+A1:2024 S1PS FO SR SC + ESD

Pack:1 - Carton: 10



02221

FEATURES_



PUNCTURE RESISTANCE



ANTISTATIC FOOTWEAR



HYDROCARBON RESISTANT



SLIP RESISTANT



ENERGY ABSORPTION CAPACITY IN THE HEEL



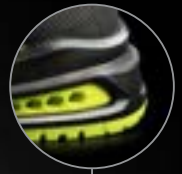
SCUFF CAP



METAL FREE



THERMOFORMED INSOLE



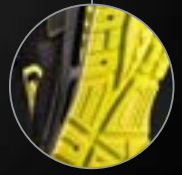
ENERGY ABSORPTION



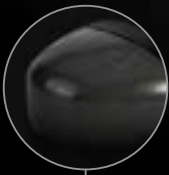
BLACK NET



REFLECTIVE MATERIAL



HYDROCARBON RESISTANT



METAL FREE



REFLECTIVE ELEMENTS



NEW

ONYX

SPORTS-STYLE WORK FOOTWEAR



8392 ONYX



S1PS

Work shoes with sports style and advanced breathable fabric, offering freshness and optimal performance for long working hours.

- Toe cap: Fiberglass, 200 joules.
- Anti-perforation insole: Interlaced textile fibers (PS), 3 mm.
- Sole: EVA rubber
- Closure: Laces
- Upper material: Microfiber
- Lining: Flyknit and heat-sealed TPU

35 - 36 - 37 - 38 - 39 - 40 - 41 - 42 - 43 - 44 - 45 - 46 - 47 - 48 - 49 - 50

Microfibre

CE certified according to standards:
EN ISO 20345:2022+A1:2024 S1PS SR FO CI ESD

Pack:1 - Carton: 10



23601

FEATURES_



ANTISTATIC FOOTWEAR



ENERGY ABSORPTION CAPACITY IN THE HEEL



SLIP RESISTANT



HYDROCARBON RESISTANT



COLD INSULATION



METAL FREE



THERMOFORMED INSOLE



ENERGY ABSORPTION



MICROFIBER



EMBOSSED LOGO



METAL FREE



HYDROCARBON RESISTANT





VITINJA

SPORTS-STYLE WORK FOOTWEAR

8385 VITINJA



S1PS

Sports-style workwear shoes made using high-tenacity textile and 3D mesh fabric, with advanced breathability. Abrasion-resistant and durable.

- Toe cap: Fiberglass, 200 joules
- Puncture-resistant insole: Woven PS textile fibres, 3mm
- Sole: EVA rubber
- Fastening: with shoelaces
- Reinforcement: Toe cap and heel TPU Melt
- Textil cut: HTT y Printing

36 - 37 - 38 - 39 - 40 - 41 - 42 - 43 - 44 - 45 - 46 - 47 - 48

HTT y Printing

CE compliance according to the following standards:
EN ISO 20345:2022 S1PS FO SR HRO

Pack:1 - Carton: 10



236

FEATURES_



PUNCTURE RESISTANCE



ANTISTATIC FOOTWEAR



HYDROCARBON RESISTANT



SLIP RESISTANT



ENERGY ABSORPTION CAPACITY IN THE HEEL



RESISTANCE TO CONTACT HEAT



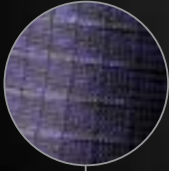
METAL FREE



THERMOFORMED INSOLE



ENERGY ABSORPTION



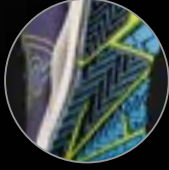
HTT



REFLECTIVE MATERIAL



METAL FREE



HYDROCARBON RESISTANT



NEW



FEATURES_



PUNCTURE RESISTANCE



ANTISTATIC FOOTWEAR



HYDROCARBON RESISTANT



SLIP RESISTANT



ENERGY ABSORPTION CAPACITY IN THE HEEL



SCUFF CAP



METAL FREE

FEATURES_



PUNCTURE RESISTANCE



ANTISTATIC FOOTWEAR



HYDROCARBON RESISTANT



WATER PENETRATION AND ABSORPTION



SLIP RESISTANT



ENERGY ABSORPTION CAPACITY IN THE HEEL



SCUFF CAP



METAL FREE

8395 RUBY



S1PS

Work shoe with next-generation textile fabric and sporty design.

- Toecap: Fiberglass, 200 joules.
- Anti-perforation insole: Interlaced textile fibres (PS), 3 mm.
- Sole: Dual-density polyurethane.
- Closure: Laces
- Reinforcement: Toe and heel.
- Upper fabric: Red Knit.
- Lining: Black 3D textile

35 - 36 - 37 - 38 - 39 - 40 - 41 - 42 - 43 - 44 - 45 - 46 - 47 - 48 - 49 - 50

Red Knit

CE certificate according to standards:
EN ISO 20345:2022+A1:2024 S1PS FO SR CI SC + ESD

Pack:1 - Carton: 10



02602

8394 GARNET



S3S

Work shoe with next-generation textile fabric and sporty design.

- Toecap: Fiberglass, 200 joules.
- Anti-perforation insole: Interlaced textile fibres (PS), 3 mm.
- Sole: Dual-density polyurethane
- Closure: Laces
- Reinforcement: Toe and heel
- Upper fabric: Red Knit
- Lining: Black 3D textile + waterproof membrane.

35 - 36 - 37 - 38 - 39 - 40 - 41 - 42 - 43 - 44 - 45 - 46 - 47 - 48 - 49 - 50

Red Knit

CE certificate according to standards:
EN ISO 20345:2022+A1:2024 S3S FO SR CI SC + ESD

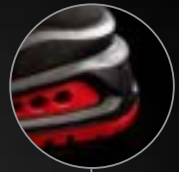
Pack:1 - Carton: 10



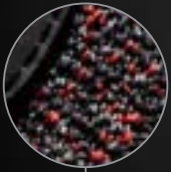
02602



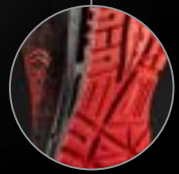
THERMOFORMED INSOLE



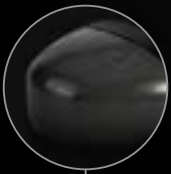
ENERGY ABSORPTION



RED KNIT



HYDROCARBON RESISTANT



METAL FREE



ULMUS

SPORTS-STYLE WORK FOOTWEAR



S3S

8382 ULMUS



Comfortable sports-style workwear shoes with reflective and breathable elements.

- Toe cap: Fiberglass, 200 joules
- Puncture-resistant insole: Woven PS textile fibres, 3mm
- Sole: Dual Density Polyurethane
- Fastening: with shoelaces
- Reinforcement: Heel
- Textile cut: Tatin

35 - 36 - 37 - 38 - 39 - 40 - 41 - 42 - 43 - 44 - 45 - 46 - 47 - 48

Tatin

CE compliance according to the following standards:
EN ISO 20345:2022 S3S FO SR ESD

Pack:1 - Carton: 10



02

20

FEATURES_



PUNCTURE
RESISTANCE



ANTISTATIC
FOOTWEAR



HYDROCARBON
RESISTANT



WATER
PENETRATION AND
ABSORPTION



SLIP
RESISTANT



ENERGY
ABSORPTION
CAPACITY
IN THE HEEL



METAL FREE

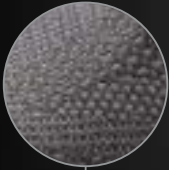
WRK FOOTWEAR



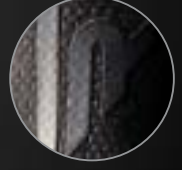
THERMOFORMED INSOLE



ENERGY ABSORPTION



TATIN



REFLECTIVE MATERIAL



METAL FREE



HYDROCARBON RESISTANT



CERYSON

SPORTS-STYLE WORK FOOTWEAR

S3S

8383 CERYSON



Sports-style workwear shoes, made with nubuck microfibre with reinforcement in the heel area.

- Toe cap: Fiberglass, 200 joules
- Puncture-resistant insole: Woven PS textile fibres, 3mm
- Sole: Dual Density Polyurethane
- Fastening: with shoelaces
- Reinforcement: Heel
- Textile cut: Water-repellent microfibre

36 - 37 - 38 - 40 - 41 - 42 - 43 - 45 - 46 - 47 - 48

Microfibra idrorepellente

CE compliance according to the following standards:
EN ISO 20345:2022 S3S FO SR SC ESD

Pack:1 - Carton: 10



02221

FEATURES_



PUNCTURE
RESISTANCE



ANTISTATIC
FOOTWEAR



HYDROCARBON
RESISTANT



WATER
PENETRATION AND
ABSORPTION



SLIP
RESISTANT



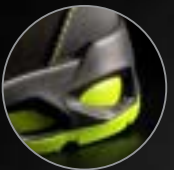
ENERGY
ABSORPTION
CAPACITY
IN THE HEEL



METAL FREE



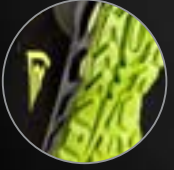
THERMOFORMED INSOLE



ENERGY ABSORPTION



FLUORESCENT MATERIAL



HYDROCARBON RESISTANT



WATER-REPELLENT MICROFIBRE



METAL-FREE





KERCUS

SPORTS-STYLE WORK FOOTWEAR

8380 KERCUS



S3S

Workwear shoes with sporty style and 3D mesh fabric, lightweight and balanced for demanding environments.

- Toe cap: Fiberglass, 200 joules
- Puncture-resistant insole: Woven PS textile fibres, 3mm
- Sole: Dual Density Polyurethane
- Fastening: with shoelaces
- Reinforcement: Toe and heel
- Textile cut: Technical textile and microfibre

36 - 37 - 38 - 39 - 40 - 41 - 42 - 43 - 44 - 45 - 46 - 47 - 48

CE compliance according to the following standards:
EN ISO 20345:2022 S3S FO SR ESD

Pack:1 - Carton: 10



0255

FEATURES_



PUNCTURE RESISTANCE



ANTISTATIC FOOTWEAR



HYDROCARBON RESISTANT



WATER PENETRATION AND ABSORPTION



SLIP RESISTANT



ENERGY ABSORPTION CAPACITY IN THE HEEL



METAL FREE



THERMOFORMED INSOLE



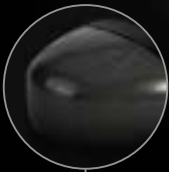
ENERGY ABSORPTION



3D MESH



REFLECTIVE MATERIAL



METAL FREE



HYDROCARBON RESISTANT





GISKAN

SPORTS-STYLE WORK BOOT

S3S

8381 GISKAN



Sports-style workwear boots with 3D mesh fabric, lightweight and balanced for demanding environments.

- Toe cap: Fiberglass, 200 joules
- Puncture-resistant insole: Woven PS textile fibres, 3mm
- Sole: Dual Density Polyurethane
- Fastening: with shoelaces
- Reinforcement: Toe and heel
- Textile cut: Technical textile and microfibre

36 - 37 - 38 - 39 - 40 - 41 - 42 - 43 - 44 - 45 - 46 - 47 - 48

Technical textile and microfibre

CE compliance according to the following standards:
EN ISO 20345:2022 S3S FO SR ESD

Pack:1 - Carton: 10



0255

FEATURES



PUNCTURE RESISTANCE



ANTISTATIC FOOTWEAR



HYDROCARBON RESISTANT



WATER PENETRATION AND ABSORPTION



SLIP RESISTANT



ENERGY ABSORPTION CAPACITY IN THE HEEL



METAL FREE



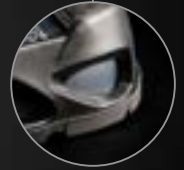
THERMOFORMED INSOLE



REFLECTIVE MATERIAL



ENERGY ABSORPTION



3D MESH

HYDROCARBON RESISTANT



METAL FREE





NOBOA

SPORTS-STYLE WORK FOOTWEAR

S3S

8384 NOBOA



Sports-style workwear shoes with an air chamber that provides advanced cushioning. Made of high tenacity fabric, providing great freedom of movement.

- Toe cap: Fiberglass, 200 joules
- Puncture-resistant insole: Woven PS textile fibres, 3mm
- Sole: Dual Density Polyurethane
- Fastening: with shoelaces
- Reinforcement: Toe and heel
- Textil cut: HTT

36 - 37 - 38 - 39 - 40 - 41 - 42 - 43 - 44 - 45 - 46 - 47 - 48

HTT

CE compliance according to the following standards:
EN ISO 20345:2022 S3S FO SR ESD

Pack:1 - Carton: 10



0205

FEATURES_



PUNCTURE
RESISTANCE



ANTISTATIC
FOOTWEAR



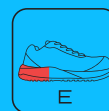
HYDROCARBON
RESISTANT



WATER
PENETRATION AND
ABSORPTION



SLIP
RESISTANT



ENERGY
ABSORPTION
CAPACITY
IN THE HEEL



METAL FREE



THERMOFORMED INSOLE



ENERGY ABSORPTION



HIT



REFLECTIVE MATERIAL



METAL FREE



HYDROCARBON RESISTANT



NEW

BRAX

WORK FOOTWEAR



S3S

8388 BRAX

Work shoes with leather and mesh fabric coating, offering durability, comfort and breathability.

- Toe cap: Fiberglass, 200 joules.
- Anti-perforation insole: Interlaced textile fibers (PS), 3 mm.
- Sole: Dual-density polyurethane (PU)
- Closure: Laces
- Reinforcement: Toe and heel
- Upper material: Leather coating and mesh fabric
- Lining: 3D mesh fabric

35 - 36 - 37 - 38 - 39 - 40 - 41 - 42 - 43 - 44 - 45 - 46 - 47 - 48 - 49 - 50

Leather coating and mesh fabric

CE certificate according to standards:
EN ISO 20345:2022+A1:2024 S3S SR FO CI SC

Pack:1 - Carton:10



0223

FEATURES_



PUNCTURE RESISTANCE



ANTISTATIC FOOTWEAR



HYDROCARBON RESISTANT



WATER PENETRATION AND ABSORPTION



SLIP RESISTANT



ENERGY ABSORPTION CAPACITY IN THE HEEL



COLD INSULATION



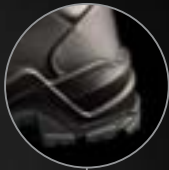
SCUFF CAP



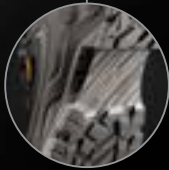
METAL FREE



THERMOFORMED INSOLE



ENERGY ABSORPTION



HYDROCARBON RESISTANT



METAL FREE



NEW

IRON

WORK BOOT



S3S

8389 IRON

Work boots with leather and mesh fabric coating, offering durability, comfort and breathability.

- Toe cap: Fiberglass, 200 joules.
- Anti-perforation insole: Interlaced textile fibers (PS), 3 mm.
- Sole: Dual-density polyurethane (PU)
- Closure: Laces
- Reinforcement: Toe and heel
- Upper material: Leather coating and mesh fabric

35 - 36 - 37 - 38 - 39 - 40 - 41 - 42 - 43 - 44 - 45 - 46 - 47 - 48 - 49 - 50

Leather coating and mesh fabric

CE certificate according to standards:
EN ISO 20345:2022+A1:2024 S3S SR FO CI SC

Pack:1 - Carton:10



0223

FEATURES_



PUNCTURE RESISTANCE



ANTISTATIC FOOTWEAR



HYDROCARBON RESISTANT



WATER PENETRATION AND ABSORPTION



SLIP RESISTANT



ENERGY ABSORPTION CAPACITY IN THE HEEL



COLD INSULATION



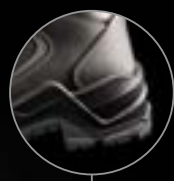
SCUFF CAP



METAL FREE



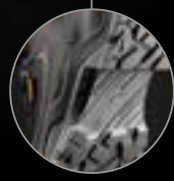
THERMOFORMED INSOLE



ENERGY ABSORPTION



METAL FREE



HYDROCARBON RESISTANT



NEW

ROCK

WORK FOOTWEAR



8390 ROCK



S7S

Work shoes made of leather fabric with fibre coating. Waterproof, offering durability, protection, and comfort for demanding work environments.

- Toe cap: Fiberglass, 200 joules.
- Anti-perforation insole: Interlaced textile fibers (PS), 3 mm.
- Sole: PU/LINXFON / FOAM inserted
- Closure: Laces
- Reinforcement: Toe and heel
- Upper material: Leather and microfibre coating

35 - 36 - 37 - 38 - 39 - 40 - 41 - 42 - 43 - 44 - 45 - 46 - 47 - 48 - 49 - 50

Leather and microfibre coating

CE certified according to standards:
EN ISO 20345:2022+A1:2024 S7S FO SR HI CI A LG SC ESD

Pack:1 - Carton: 10



2370

FEATURES_



PUNCTURE RESISTANCE



ANTISTATIC FOOTWEAR



HYDROCARBON RESISTANT



WATERPROOF



SLIP RESISTANT



ENERGY ABSORPTION CAPACITY IN THE HEEL



HIGH INSULATION



COLD INSULATION



SCUFF CAP



LADDER GRIP



METAL FREE



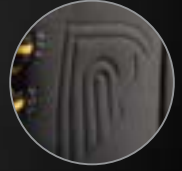
THERMOFORMED INSOLE



ENERGY ABSORPTION



DEBOSSED LOGO



METAL FREE

HYDROCARBON RESISTANT



NEW

LUA
WORK BOOT



S7S

8391 LUA

Work boots made of leather fabric with fibre coating. Waterproof, offering durability, protection, and comfort for demanding work environments.

- Toe cap: Fiberglass, 200 joules.
- Anti-perforation insole: Interlaced textile fibers (PS), 3 mm.
- Sole: PU/LINXFON / FOAM inserted
- Closure: Laces
- Reinforcement: Toe and heel
- Upper material: Leather and microfibre coating

35 - 36 - 37 - 38 - 39 - 40 - 41 - 42 - 43 - 44 - 45 - 46 - 47 - 48 - 49 - 50

Leather and microfibre coating

CE certified according to standards:
EN ISO 20345:2022+A1:2024 S7S FO SR HI CI A AN LG SC ESD

Pack:1 - Carton: 10



2370

FEATURES_



PUNCTURE RESISTANCE



ANTISTATIC FOOTWEAR



HYDROCARBON RESISTANT



WATERPROOF



SLIP RESISTANT



ENERGY ABSORPTION CAPACITY IN THE HEEL



HIGH INSULATION



COLD INSULATION



SCUFF CAP



ANKLE PROTECTION



LADDER GRIP



METAL FREE



THERMOFORMED INSOLE

ENERGY ABSORPTION

DEBOSSED LOGO

HYDROCARBON RESISTANT

METAL FREE





NEW

PEARL

WORK FOOTWEAR

8387 PEARL



S2

Work shoes made of 3D mesh fabric with a lycra ankle closure that fits snugly to prevent the entry of debris.

- Toe cap: Fiberglass, 200 joules.
- Sole: Dual-density polyurethane (PU)
- Closure: Lycra fitting system for easy slip-on
- Upper material: Microfibre
- Lining: 3D mesh fabric

35 - 36 - 37 - 38 - 39 - 40 - 41 - 42 - 43 - 44 - 45 - 46 - 47 - 48

Microfibre

CE certified according to standard:
EN ISO 20345:2022+A1:2024 S2 SR FO CI ESD

Pack:1 - Carton: 10



01

FEATURES_



ANTISTATIC FOOTWEAR



HYDROCARBON RESISTANT



WATER PENETRATION AND ABSORPTION



SLIP RESISTANT



ENERGY ABSORPTION CAPACITY IN THE HEEL



COLD INSULATION



METAL FREE



THERMOFORMED INSOLE



ENERGY ABSORPTION



DEBOSSED LOGO



HYDROCARBON RESISTANT



METAL FREE





NEW



8386 SALT



S2

Work shoes with microfibre textile fabric with elastic insert for easy fitting, providing comfort, lightness, and practicality for demanding workdays.

- Toe cap: Fiberglass, 200 joules.
- Sole: Dual-density polyurethane (PU)
- Upper material: Microfibre
- Lining: 3D mesh fabric

35 - 36 - 37 - 38 - 39 - 40 - 41 - 42 - 43 - 44 - 45 - 46 - 47 - 48

Microfibre

CE certified according to standard:
EN ISO 20345:2022+A1:2024 S2 SR FO CI ESD

Pack:1 - Carton: 10



FEATURES_



ANTISTATIC FOOTWEAR



HYDROCARBON RESISTANT



WATER PENETRATION AND ABSORPTION



SLIP RESISTANT



ENERGY ABSORPTION CAPACITY IN THE HEEL



COLD INSULATION



METAL FREE

NEW



O1SR

8393 OPAL

Work shoe.

- Toecap: Non-safety.
- Insole: Synthetic
- Sole: Dual-density polyurethane
- Closure: Velcro
- Textile cut: White Microfibre
- Lining: White non-woven polyester fabric

35 - 36 - 37 - 38 - 39 - 40 - 41 - 42 - 43 - 44 - 45 - 46 - 47 - 48

Microfibre

CE certified according to standards:
EN ISO 20347:2022 +A1:2024 01 SR A

Pack:1 - Carton: 10



01

FEATURES_



ANTISTATIC
FOOTWEAR



SLIP
RESISTANT



ENERGY
ABSORPTION
CAPACITY
IN THE HEEL

NEW

BASALT

WORK FOOTWEAR



O1SR

8396 BASALT

Work shoe with breathable textile fabric and a sporty design.

- Toecap: Non-safety.
- Insole: High-density highpoly
- Sole: Eva rubber
- Closure: Laces
- Reinforcement: Toe and heel
- Upper fabric: Black Knit with black melted TPU.
- Lining: Black neoprene with back reinforcement

35 - 36 - 37 - 38 - 39 - 40 - 41 - 42 - 43 - 44 - 45 - 46 - 47 - 48 - 49 - 50

Black Knit with black melted TPU

CE certificate according to standards:
EN ISO 20347:2022 +A1:2024 01 SR HRO CI SC FO

Pack:1 - Carton: 10



02

FEATURES_



ANTISTATIC FOOTWEAR



RESISTANCE TO CONTACT HEAT



SLIP RESISTANT



ENERGY ABSORPTION CAPACITY IN THE HEEL



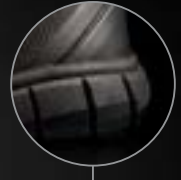
COLD INSULATION



SCUFF CAP



THERMOFORMED INSOLE



ENERGY ABSORPTION



BLACK KNIT



HYDROCARBON RESISTANT



**MAXIMUM SAFETY WITH THE
HIGH-VIZ WORKWEAR FROM
ROLY WRK. REFLECTIVE T-SHIRTS,
TROUSERS, SWEATSHIRTS AND
COATS. COMFORTABLE AND
DURABLE DESIGN. PRODUCTS
WITH CERTIFICATES:**

- EN ISO 13688**
- EN ISO 20471**
- EN 343**
- EN 14058**
- EN 17353**

02_

**HIGH
VISIBILITY**

EUROPEAN STANDARDS_



EN 17353 **ENHANCED VISIBILITY EQUIPMENT FOR MEDIUM RISK SITUATIONS**

EN 17353 specifies the requirements applicable to clothing and accessories with increased visibility for situations of medium risk.

Increased visibility clothing and accessories are intended to offer visibility to the wearer in medium risk situations in any daylight conditions and/or under the illumination of vehicle headlights or spotlights in the dark.



EN ISO 20471 **HIGH VISIBILITY CLOTHING**

The high-visibility clothing is intended to provide conspicuity of the wearer in any light condition when viewed by operators of vehicles or other mechanized during daylight conditions and under illumination of headlights in the dark. The use of a high-visibility piece of garment does not guarantee full visibility of the user under all conditions. High-visibility clothing is divided in three classes, depending on the minimum surfaces of visible material.

CLASS 1: They are used in activities that allow the wearer to be viewed completely without hesitance from approaching vehicles. There should be enough distance between the worker and the traffic, which should not travel at more than 40 km/h.

CLASS 2: Their use is applied to situations where a greater visibility is needed, under bad weather conditions or situations where the workers carry out tasks that could distract their attention from the approaching traffic or situate them close to vehicles travelling at more than 40 km/h.

CLASS 3: They are used by those workers who are exposed to a great danger in high work load situations, bad weather conditions or speed traffic of more than 80 km/h.



EN ISO 13688 GENERAL REQUIREMENTS

Protective clothing replaces or covers personal clothing and is designed to provide protection against one or more hazards. This standard regulates the general requirements of ergonomics, safety, size designation, aging, compatibility and marking of protective clothing and the information that the manufacturer has to provide with the clothing.



EN 343 PROTECTION AGAINST RAIN

The European standard EN 343 specifies the requirements and test methods applicable to the materials used and to the seams made to make protective clothing against rainfall in the form of rain, snow, fog and soil moisture with temperatures up to -5°C . The standard, in addition to the criteria suitable for defining excellent waterproofing, defines the comfort criteria of the garment that will be intended for both work and leisure.



EN 14058 GARMENTS FOR PROTECTIONS AGAINST COOL ENVIROMENTS

EN 14058 specifies the requirements and test methods for the performance of garments for the protection of the body against the effects of cold environments with temperatures above -5°C . These effects include not only low air temperatures, but also humidity and air velocity.



NEW PRODUCTS



9324 FORAN

Enhanced-visibility short-sleeved piqué polo with anti-pilling treatment.

- Two segmented reflective strips on the chest and back and one on each sleeve.
- Tone-on-tone 3-button placket.
- 1x1 ribbed collar and cuffs.
- Taped neckline.
- Pocket, optional.
- Outer Roly WRK label.
- Wash cycles: x25

XS - S - M - L - XL - 2XL - 3XL

60% cotton 40% polyester piqué, 220 gsm

CE CAT II CERTIFICATION ACCORDING TO STANDARDS
EN ISO 13688:2013 + EN ISO 13688:2013_A1:2021
EN 17353:2020 B3

Print code: F(1), O1, N(4), P

Pack:1 - Carton: 50



9325 FORAN L/S

Enhanced-visibility long sleeved piqué polo with anti-pilling treatment.

- Two segmented reflective strips on the body and two on each sleeve.
- Tone-on-tone 3-button placket.
- 1x1 ribbed collar and cuffs.
- Taped neckline.
- Pocket, optional.
- Outer Roly WRK label.
- Wash cycles: x25

XS - S - M - L - XL - 2XL - 3XL

60% cotton 40% polyester piqué, 220 gsm

CE CAT II CERTIFICATION ACCORDING TO STANDARDS
EN ISO 13688:2013 + EN ISO 13688:2013_A1:2021
EN 17353:2020 B3

Print code: F(1), o1, n(4), p

Pack:1 - Carton: 25



SEGMENTED HV STRIPS



9317 TAURI

Breathable high-visibility short-sleeved t-shirt.

- Polyester-cotton blend with cotton feel.
- Two segmented strips on the body and one on the sleeves.
- Collar in the matching fabric.
- Taped neckline.
- Available in solid or contrast colour options.
- Outer Roly WRK label.
- Wash cycles: x25

S - M - L - XL - 2XL - 3XL - 4XL

55% cotton and 45% polyester, 170 gsm

CE compliance according to the following standards: EN ISO 13688:2013/A1:2021
EN ISO 20471:2013/A1:2016.
Class I: 55221 - 55223 - 52221 - 23221.
Class II: 221 - 223.

Print code: F1(6), N(8), O1, P

Pack:1 - Carton: 50



9318 ATRIO

Breathable high-visibility short-sleeved polo shirt.

- Polyester-cotton blend with cotton feel.
- Two segmented strips on the body.
- Sleeve with 1x1 ribbed cuffs and collar.
- Placket with 3 contrasting buttons.
- Pocket, optional.
- Taped neckline.
- Available in solid or contrast colour options.
- Outer Roly WRK label.
- Wash cycles: x25

S - M - L - XL - 2XL - 3XL - 4XL

55% cotton and 45% polyester, 170 gsm.

CE compliance according to the following standards:
EN ISO 13688:2013/A1:2021
EN ISO 20471:2013/A1:2016.
Class I.

Print code: F1(6), N(8), O1, P

Pack:1 - Carton: 25





9319 ATRIO LS

Breathable high-visibility long-sleeved polo shirt.

- Polyester-cotton blend with cotton feel.
- Two segmented strips on the body and two on the sleeves.
- 1x1 ribbed cuff and collar.
- Placket with 3 contrasting buttons.
- Pocket, optional.
- Taped neckline.
- Available in solid or contrast colour options.
- Outer Roly WRK label.
- Wash cycles: x25

S - M - L - XL - 2XL - 3XL - 4XL

55% cotton and 45% polyester, 170 gsm.

CE compliance according to the following standards: EN ISO 13688:2013/A1:2021

EN ISO 20471:2013/A1:2016.

Class I: 601221 - 55221 - 55223 - 52221 - 23221.

Class II: 221 - 223.

Print code: F1(6), N(8), O1, P

Pack:1 - Carton: 25



221 601221 55221 52221 23221 223 55223







9315 VEGA

High visibility two-tone short-sleeved polo shirt.

- Breathable technical fabric.
- Two segmented strips on the body.
- 1x1 ribbed collar.
- Placket with 3 contrasting buttons.
- Pocket, optional.
- Taped neckline.
- Outer Roly WRK label.
- Wash cycles: x25

S - M - L - XL - 2XL - 3XL - 4XL

100% bird's eye polyester, 170 gsm.

CE certified according to:
 EN ISO 13688:2013/A1:2021
 EN ISO 20471:2013/A1:2016.
 All colour options in Class I.

Print code: F1(6), N(8), 01, P, R

Pack:1 - Carton: 50



55221



9316 VEGA LS

High visibility two-tone long sleeved polo shirt.

- Breathable technical fabric.
- Two segmented strips on the body.
- 1x1 ribbed collar.
- Placket with 3 contrasting buttons.
- Pocket, optional.
- Taped neckline.
- Outer Roly WRK label.
- Wash cycles: x25

S - M - L - XL - 2XL - 3XL - 4XL

100% bird's eye polyester, 170 gsm.

CE compliance according to the following standards:
 EN ISO 13688:2013/A1:2021
 EN ISO 20471:2013/A1:2016.
 Class I.

Print code: F1(6), N(8), 01, P, R

Pack:1 - Carton: 25



55221



REFLECTIVE STRIP_



9310 DELTA

High-visibility short-sleeved t-shirt

- Breathable technical fabric.
- Two reflective strips on the body and one on the sleeves.
- Collar in the matching fabric.
- Taped neckline.
- Available in solid or contrast colour options.
- Outer Roly WRK label.
- Wash cycles: x25

S - M - L - XL - 2XL - 3XL - 4XL

100% bird's eye polyester, 130 gsm.

CE compliance according to the following standards:

EN ISO 13688:2013/A1:2021

EN ISO 20471:2013/A1:2016.

Class I: 601221 - 55221 - 55223 - 52221 - 23221.

Class II: 221 - 223

Print code: F1(6), N(8), O1, P, R

Pack:1 - Carton: 50



9302 POLARIS

High-visibility short-sleeved polo shirt.

- Breathable technical fabric.
- Two reflective strips on the body and one on the sleeves.
- 1x1 ribbed collar.
- Taped neckline.
- Available in solid or contrast colour options.
- Outer Roly WRK label.
- Wash cycles: x25

S - M - L - XL - 2XL - 3XL - 4XL

100% polyester piqué, 170 gsm.

CE compliance according to the following standards:

EN ISO 13688:2013/A1:2021

EN ISO 20471:2013/A1:2016

Class I: 601221 - 55221 - 55223 - 52221 - 23221.

Class II: 221.

Print code: F1(6), N(8), O1, P

Pack:1 - Carton: 50





9306 POLARIS L/S

High-visibility long-sleeved polo shirt.

- Breathable technical fabric.
- Two reflective bands on the body and two on the sleeves.
- 1x1 ribbed cuffs and collar.
- Placket with 3 matching buttons.
- Pocket, optional.
- Taped neckline.
- Available in solid or contrast colour options.
- Outer Roly WRK label.
- Wash cycles: x25

S - M - L - XL - 2XL - 3XL - 4XL

100% polyester piqué, 170 gsm.

CE compliance according to the standards:
 EN ISO 13688:2013/A1:2021
 EN ISO 20471:2013/A1:2016
 Class II.

Print code: F1(6), N(8), O1, P, R

Pack:1 - Carton: 25



221 601221 55221 52221 23221 55223



9313 PERSEI

Reversible padded high-visibility multi-pocket vest with extended back.

- Outer fabric in navy blue.
- Inner fabric in fluorescent yellow with reflective tapes.
- Two front double-access pockets (side and top) with gusset and flap.
- Multi-purpose chest pocket.
- Front zip with reversible pull.
- Elasticated adjustable armholes.
- Elasticated pieces on the waist.
- Extended back flap.
- Outer Roly WRK label.
- Wash cycles: x25

S - M - L - XL - 2XL - 3XL - 4XL

Shell: 100% polyester, taffeta.

Padding: 100% polyester.

Fluor fabric: 100% single jersey polyester.

450 gsm.

CE certification according to:

EN ISO 13688:2013/A1:2021

EN ISO 20471:2013/A1:2016.

Class I.

Print code: N(8), O2, P

Pack:1 - Carton: 10



55221





JACKETS & HOODIES_



9303 ANTARES

Two-tone high-visibility softshell jacket, 3-layer, water-repellent.

- Two reflective strips on the body and on the sleeves.
- Inverted front zip.
- Two side zip pockets and one right chest pocket.
- Elastic adjuster on the lower inner hem.
- Velcro adjustable cuffs.
- Outer Roly WRK label.
- Wash cycles: x25

S - M - L - XL - 2XL - 3XL - 4XL

Three layers. Shell: 92% polyester / 8% elastane. Lining: 100% microfleece polyester, 320 gsm.

CE compliance according to the standards:

EN ISO 13688:2013/A1:2021

EN ISO 20471:2013/A1:2016

Class II.

Print code: N(8), O2, P

Pack:1 - Carton: 15



601221 55221 52221 23221 55223



9314 SPICA

High visibility 3/4 Zip sweatshirt.

- High collar with chin guard in the same fabric.
- 1x1 ribbed cuffs and hem.
- Two reflective strips on the body and on the sleeves.
- Available in solid or contrast colour options.
- Outer Roly WRK label.
- Wash cycles: x25

S - M - L - XL - 2XL - 3XL - 4XL

100% polyester, brushed fleece, 280 gsm.

CE certified according to:

EN ISO 13688:2013/A1:2021

EN ISO 20471:2013/A1:2016

Class I: 601221 - 55221-55223-52221-23221

Class II: 221

Print code: F3(), N(8), O3, P

Pack:1 - Carton: 25



221 601221 55221 52221 23221 55223





9305 ALTAIR

High visibility fleece jacket.

- Front zip with chin guard in the same fabric.
- Two reflective strips on the body and on the sleeves.
- Two side zip pockets and one right chest pocket.
- Elasticated cuffs.
- Elastic adjuster on the lower inner hem.
- Available in solid or contrast colour options.
- Outer Roly WRK label.
- Wash cycles: x5

S - M - L - XL - 2XL - 3XL - 4XL

100% polyester, fleece, 300 gsm.

CE compliance according to the standards:
 EN ISO 13688:2013/A1:2021
 EN ISO 20471:2013/A1:2016
 Class II.

Print code: N(8), O1, P

Pack:1 - Carton: 15



221 601221 55221 52221 23221 55223



HV JACKETS_





9320 MERAK

High-visibility padded parka.

- Waterproof fabric with heat-sealed seams, resistant to wind and rain
- Roll-up hood.
- Two-way front zip and with flap and copper snap buttons.
- Inner cuffs adjustable for warmth.
- Two horizontal and two vertical reflective strips on the body.
- Two reflective strips on the sleeves.
- Two side flap pockets.
- Chest pocket with flap and identification card holder.
- Inner zip pocket.
- Back opening for reprocessing.
- Available in solid or contrast colour options.
- Outer Roly WRK label.
- Wash cycles: x25

S - M - L - XL - 2XL - 3XL - 4XL

Shell: 100% waterproof laminated polyester.
Lining: 100% polyester.
Wadding: 100% polyester.
395 gsm.

CE compliance according to the following standards: EN ISO 13688:2013/A1:2021
EN ISO 20471:2013/A1:2016 2
EN 343:2019. Class 3_1
EN 14058:2017. Class 4_2_0,24_m²k/w WP.
Class II: 221 - 601221 - 55221 - 55223 - 52221 - 23221.

Print code: F3(6), N(8), O1, P

Pack:1 - Carton: 10



221 601221 55221 52221 23221 55223



9304 EPSYLON

High-visibility two-tone padded jacket.

- Waterproof fabric with heat-sealed seams, resistant to wind and rain
- Roll-up hood.
- Front zip and flap with Velcro closures.
- Two horizontal reflective strips on the body.
- Two reflective strips on the sleeves.
- Cuffs with velcro closure and rubberised part.
- Two side zip pockets.
- Right chest pocket.
- Inner zip pocket.
- Back opening for reprocessing.
- Elasticated waistband.
- Outer Roly WRK label.
- Wash cycles: x25

S - M - L - XL - 2XL - 3XL - 4XL

Shell: 100% waterproof polyester.
Lining: 100% polyester
Wadding: 100% polyester.
400 gsm.

CE certification according to the standards:
EN ISO 13688:2013/A1:2021
EN ISO 20471:2013/A1:2016.
EN 343:2019.
Class II

Print code: N(8), O2, P

Pack:1 - Carton: 10



601221 55221 52221 23221 55223



9323 BETA

High-visibility two-tone multi-pocket vest.

- Two horizontal reflective strips.
- V-neck.
- Front zip with pull.
- Upper right pocket with metal ring.
- Two flap pockets with Velcro closure between reflective stripes.
- Two side zip pockets with two overlaid flap pockets with Velcro closure.
- Two back pockets with flap and Velcro closure.
- Piped edges with matching fabric trim.
- Outer Roly WRK label.
- Wash cycles: x25

S - M - L - XL - 2XL - 3XL

Main fabric: 65% polyester / 35% cotton, 200 gsm twill
 HV fabric: 50% polyester / 50% cotton, 250 gsm twill

CE certification according to the following standards:
 EN ISO 13688:2013/A1:2021
 EN 17353:2020
 Class B3

Print code: N(8), O, P

Pack:1 - Carton: 50



55221 55223



9311 POLUX

High-visibility vest.

- Two reflective stripes on the body and two on the shoulder.
- No side seams.
- Identification card holder pocket.
- Front zip closure.
- Colour options available.
- Outer Roly WRK label.
- Wash cycles: x25

M-L - XL-2XL

100% polyester, 135 gsm

CE compliance according to the standards:
 EN ISO 13688:2013/A1:2021
 EN ISO 20471:2013/A1:2016
 Class II.

Print code: F(6), N(8), O(6), R

Pack:1 - Carton: 50



221 223



HIGH VISIBILITY



5063 SIRIO

High-visibility vest.

- Two reflective strips on the body.
- Side seams.
- Two tone-on-tone Velcro closures.
- Colour options available.
- Outer Roly WRK label.
- Wash cycles: x25

M-L - XL-2XL

100% polyester, single jersey, 135 g/m²

CE certificate according to the following standards:

EN ISO 13688:2013/A1:2021

EN ISO 20471:2013/A1:2016.

Class II.

Print code: F(6), N(8), O, R

Pack:1 - Carton:100



221

223



NEW

HV SHORTS_



9328 LADA

High-visibility two-tone multi-pocket shorts.

- Durable fabric.
- Elasticated waistband at the back.
- Two front pockets with contrasting details.
- Two back pockets with flap and Velcro closure with contrasting details.
- Two cargo pockets with flap and Velcro closure with contrasting details.
- Two reflective segmented strips on the legs.
- Fluorescent panels on legs
- Outer Roly WRK label.
- Wash cycles: x25

S - M - L - XL - 2XL - 3XL

Main fabric: 65% polyester 35% cotton, 210 gsm
Contrast fabric: 80% polyester 20% cotton, 210 gsm

CE CAT II CERTIFICATION ACCORDING TO STANDARDS
EN ISO 13688:2013 + EN ISO 13688:2013_A1:2021
ISO 20471:2013+A1:2016 CLASS 1

Print code: 02, N(2), P

Pack:1 - Carton: 50



601221 55221 52221 23221 55223





HV TROUSERS



9307 DAILY HV

Multi-pocket long trousers with enhanced visibility.

- Durable fabric.
- Elasticated waistband at the back.
- Two front pockets.
- Right back pocket with flap and Velcro closure.
- Two cargo pockets with flap and Velcro closure.
- Reinforced crotch.
- Reinforced knee pads.
- Two reflective tapes on the legs.
- Outer Roly WRK label.
- Wash cycles: x25

38 - 40 - 42 - 44 - 46 - 48 - 50 - 52 - 54 - 56 - 58 - 60

65% polyester / 35% cotton, 240 gsm twill.

CE certified according to:
EN ISO 13688:2013/A1:2021
EN17353:2020
Class B2.

Print code: N(8), O, P, N(8), O, P

Pack:1 - Carton: 25



9309 ALFA

High-visibility multi-pocket trousers.

- Durable fabric.
- Elasticated waistband at the back.
- Two front pockets.
- Two back pockets with flap and Velcro closure.
- Two cargo pockets with flap and Velcro closure.
- Two reflective tapes on the legs.
- Outer Roly WRK label.
- Wash cycles: x25

38 - 40 - 42 - 44 - 46 - 48 - 50 - 52 - 54 - 56 - 58 - 60

80% polyester / 20% cotton, 235 gsm twill.

CE compliance according to the standards:
EN ISO 13688:2013/A1:2021
EN ISO 20471:2013/A1:2016
Class II.

Print code: N(8), O, P

Pack:1 - Carton: 25



HV TROUSERS_



9321 ENIX

High-visibility two-tone multi-pocket long trousers.

- Durable fabric with inner fleece lining for cold environments.
- Elasticated waistband at the back.
- Two front pockets with contrasting details.
- Two back pockets with flap and Velcro closure with contrasting details.
- Two cargo pockets with flap and Velcro closure with contrasting details.
- Two reflective tapes on the legs.
- Outer Roly WRK label.
- Wash cycles: x25

38 - 40 - 42 - 44 - 46 - 48 - 50 - 52 - 54 - 56 - 58 - 60

Two layers:

Shell: 80% polyester and 20% cotton, 235 gsm twill.

Lining: 100% fleece polyester, 185 gsm.

CE compliance according to the following standards: EN ISO 13688:2013/A1:2021
EN ISO 20471:2013/A1:2016.

Class I.

Print code: N(8), O, P

Pack:1 - Carton: 20



601221 55221 52221 23221 55223



9312 DAILY STRETCH HV

High-visibility two-tone multi-pocket long trousers.

- Durable stretch fabric.
- Elasticated waistband at the back.
- Two front pockets.
- Two back pockets with flap and Velcro closure.
- Two cargo pockets with flap and Velcro closure.
- Two reflective tapes on the legs.
- Outer Roly WRK label.
- Wash cycles: x25

38 - 40 - 42 - 44 - 48 - 50 - 52 - 54 - 56 - 58 - 60

65% polyester / 33% cotton / 2% elastane, 250 gsm twill.

CE certification according to:

EN ISO 13688:2013/A1:2021

EN ISO 20471:2013/A1:2016.

Class I.

Print code: N(8), O, P

Pack:1 - Carton: 25



601221 55221 52221 23221 55223





_NAOS

HIGH VISIBILITY



9301 SOAN

High-visibility two-tone multi-pocket long trousers.

- Durable fabric.
- Elasticated waistband at the back.
- Two front pockets.
- Two back pockets with flap and Velcro closure.
- Two cargo pockets with flap and Velcro closure.
- Two reflective tapes on the legs.
- Fluorescent panels between reflective stripes.
- Outer Roly WRK label.
- Wash cycles: x25

38 - 40 - 42 - 44 - 46 - 48 - 50 - 52 - 54 - 56 - 58 - 60

80% polyester / 20% cotton, 240 gsm twill.

CE certification according to the standards:
 EN ISO 13688:2013/A1:2021
 EN ISO 20471:2013/A1:2016
 Class I.

Print code: N(8), O, P

Pack:1 - Carton: 25



9300 NAOS

High-visibility two-tone multi-pocket long trousers.

- Durable fabric.
- Elasticated waistband at the back.
- Two front pockets.
- Two back pockets with flap and Velcro closure.
- Two cargo pockets with flap and Velcro closure.
- Two reflective tapes on the legs.
- Fluorescent panels between reflective stripes.
- Outer Roly WRK label.
- Wash cycles: x25

38 - 40 - 42 - 44 - 46 - 48 - 50 - 52 - 54 - 56 - 58 - 60

80% polyester / 20% cotton, 200 gsm twill.

CE certification according to the standards:
 EN ISO 13688:2013/A1:2021
 EN ISO 20471:2013/A1:2016
 Class I.

Print code: N(8), O, P

Pack:1 - Carton: 25



CHOOSE YOUR FAVOURITE COMBINATION





601221



55221



52221



23221



55223



221



223

9317 TAURI



9310 DELTA



9300 NAOS



9302 POLARIS



9318 ATRIO



9328 LADA



9306 POLARIS L/S



9319 ATRIO L/S



9301 SOAN



9320 MERAK



9304 EPSYLON



9312 DAILY STRETCH HV



9303 ANTARES



9314 SPICA



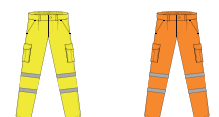
9305 ALTAIR



9321 ENIX



9309 ALFA



**ROLYWRK'S INDUSTRIAL
CLOTHING OFFERS COMFORT
AND DURABILITY TO SUIT ALL
DAY-TO-DAY NEEDS. MATCHING
T-SHIRTS, TROUSERS AND
SWEATSHIRTS MAKE THE BEST
UNIFORM FOR YOUR COMPANY.**



03_

INDUS

_TRY



SPECIFI _CATIONS FLAME RETARDANT GARMENTS_



EN ISO 11612
CLOTHING TO PROTECT AGAINST HEAT AND FLAME.
MINIMUM PERFORMANCE REQUIREMENTS

Protective clothing that complies with this European standard is intended for a wide range of application which offer limited flame spread and provide protection against various hazards including radiant heat, convective heat and splatters of molten metal.



EN 1149-5
ELECTROSTATIC PROPERTIES

This European Standard specifies material and design requirements for electrostatic dissipative protective clothing, to avoid incendiary discharges. The material and design requirements may not provide sufficient protection in oxygen enriched flammable atmospheres. This European Standard is not applicable for protection against mains voltages.



EN 61482-2
PROTECTIVE CLOTHING AGAINST THE THERMAL HAZARDS
OF AN ELECTRIC ARC

This standard is applicable to protective clothing used in work where there is the risk of exposure to an electric arc hazard. This type of clothing protect the wearer against the different effects derived from the exposure to this kind of hazard.



EN ISO 11611
PROTECTIVE CLOTHING FOR USE IN WELDING AND
ALLIED PROCESSES

This standard specifies the minimum basic safety requirements and test methods for protective clothing to be worn during welding and allied processes with comparable risks. This type of protective clothing is intended to protect the wearer against spatter, short contact time with flame, radiant heat from an electric arc used for welding and allied processes, and minimizes the possibility of electrical shock by short-term during accidental contact.

SAN
TANA_





9401 DEFENDER

Flame-retardant long-sleeved t-shirt in plain knit.

- Crew neck and 1x1 ribbed cuffs, antistatic and flame-retardant.
- Taped neckline on the main fabric.
- Flame retardant symbols printed on the lower right.
- Wash cycles: x5

S - M - L - XL - 2XL - 3XL - 4XL

60% modacrylic / 37% cotton / 3% carbon fibre, single jersey, 220 gsm.

CE compliance according to the following standards:

UNE-EN ISO 13688:2013/A1:2021

UNE-EN ISO 11612:2015: A1, B1, C1, F1.

UNE-EN 1149-5:2018.

UNE-EN 61482-2-2020: APC =1.

Print code: N(8), O2, P

Pack:1 - Carton: 50



55



9402 SANTANA

Flame-retardant long-sleeved t-shirt in plain knit.

- Crew neck and 1x1 ribbed cuffs, antistatic and flame-retardant.
- Placket with three covered buttons.
- Taped neckline on the main fabric.
- Side slits.
- Flame retardant symbols printed on the lower right.
- Wash cycles: x5

S - M - L - XL - 2XL - 3XL - 4XL

60% modacrylic / 37% cotton / 3% carbon fibre, single jersey, 220 gsm.

CE compliance according to the following standards:

UNE-EN ISO 13688:2013/A1:2021.

UNE-EN ISO 11612:2015: A1, B1, C1, F1.

UNE-EN 1149-5:2018.

UNE-EN 61482-2-2020: APC =1.

Pack:1 - Carton: 25



55







9403 CRUISER

Flame-retardant jacket in durable fabric.

- Front zip with flap and Velcro.
- Two chest pockets with flap and Velcro.
- Two side pockets with Velcro.
- Rubberised cuff and waist.
- Back yoke.
- Velcro closure on the collar.
- Flame retardant symbols printed on the right sleeve.
- Wash cycles: x50

S - M - L - XL - 2XL - 3XL - 4XL

98% cotton / 2% carbon fibre, twill, 360 gsm.

CE compliance according to the following standards:

EN ISO 13688:2013/A1:2021

EN ISO 11611:2015: CLASE 1

EN ISO 11612:2015: A1, A2, B1, C1, E3, F1

EN 1149-5:2008

EN 61482-2:2020: APC =1.

Pack:1 - Carton: 15



55



9400 RANGER

Long trousers in resistant flame-retardant fabric.

- Elasticated waistband at the back.
- Two side pockets at the seams.
- Back yoke with two flap pockets and Velcro closure.
- Hidden zip and snap button, antioxidant metal accessories.
- Flame retardant symbols printed on the cover of the right back pocket flap.
- Wash cycles: x50

38 - 40 - 42 - 44 - 46 - 48 - 50 - 52 - 54 - 56 - 58 - 60

98% cotton / 2% carbon fibre, twill, 360 gsm.

CE compliance according to the following standards:

EN ISO 13688:2013/A1:2021

EN ISO 11611:2015: A1 + A2 CLASE 1

EN ISO 11612:2015: A1 + A2, B1, C1, E3, F1

EN 1149-5:2018

EN 61482-2:2020: APC =1.

Pack:1 - Carton: 20



55



CRUISER & RANGER_

BLA_
ZER





9404 BLAZER

Flame-retardant work overall with raglan long sleeves in durable fabric.

- Two-way front zip with flap and Velcro closures.
- Elasticated waistband and cuffs.
- Right chest pocket with flap and Velcro closures.
- Side pockets with flap and Velcro closures.
- Flame retardant symbols printed on the right sleeve.
- Wash cycles: x50

S - M - L - XL - 2XL - 3XL - 4XL

98% cotton / 2% carbon fibre, twill, 360 gsm.

CE compliance according to the following standards:

EN ISO 13688:2013/A1:2021

EN ISO 11611:2015: CLASE 1: A1 + A2

EN ISO 11612:2015: A1 + A2, B1, C1, E3, F1

EN 1149-5:2018

EN 61482-2:2020: APC =1.

Pack:1 - Carton: 10



55



SERVICIES_

TECHNICAL

_GARMENTS

OUR WORKWEAR HAS BEEN
METICULOUSLY DESIGNED TO COPE
WITH THE MOST DEMANDING WORK
ENVIRONMENTS ENSURING THAT
WORKERS ARE PREPARED TO MEET
ANY CHALLENGE THEY FACE WITH
CONFIDENCE.





BASICS FOR INDUSTRY_



NEW



9327 KUTTA

Short-sleeved t-shirt.

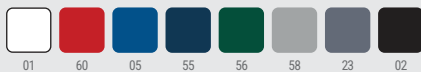
- 1x1 ribbed crew neck.
- Seams in the same tone.

XS - S - M - L - XL - 2XL - 3XL - 4XL - 5XL

60% cotton, 40% polyester, 180gsm

Print code: F(1), O1, N(4), P

Pack:1 - Carton: 50



NEW



8421 SIAN

Technical unisex short-sleeved polo shirt.

- 1x1 rib on collar and sleeves with contrasting colour detail.
- 3-button placket.
- Taped neckline in matching fabric.

XS - S - M - L - XL - 2XL - 3XL

100% polyester waffle, 200gsm

Print code: F(1), O1, N(4), P

Pack:1 - Carton: 50



MULTI-POCKET VEST_



5067 ALMANZOR

Padded multi-pocket work vest with extended back.

- Front zip with placket and velcro closure.
- Multi-purpose right chest pocket.
- Two front double-access pockets (side and top) with gusset and flap.
- Zip pocket on the right side.
- Elasticated adjustable armholes.
- Adjustable flaps on the sides with snap buttons.
- Interior left pocket with velcro closure.
- Outer Roly WRK label.

S - M - L - XL - 2XL - 3XL - 4XL

Shell: 80% polyester / 20% cotton, 200 gsm.
Lining: 100% quilted polyester, 170 gsm.

Print code: N(8), O2, P

Pack:1 - Carton: 20



9111 VENERA

Multi-pocket work vest.

- V-neck.
- Front zip with pull.
- Upper right pocket with metal ring.
- Two pockets with flap and Velcro closure.
- Two side zip pockets with two overlaid flap pockets with Velcro closure.
- Two back pockets with flap and Velcro closure.
- Piped edges with matching fabric trim.
- Outer Roly WRK label.

S - M - L - XL - 2XL - 3XL

80% polyester / 20% cotton, 200 gsm.

Print code: F(6), N(8), O2(O), P, R

Pack:1 - Carton: 50







6725 ARMOUR

Bermuda shorts with pockets.

- Adjustable elastic waistband on both sides.
- Two front pockets.
- Two side pockets with flap, velcro fastening and central bellows.
- Two back pockets with button.

S - M - L - XL - 2XL - 3XL

80% polyester / 20% cotton, 200 gsm twill.

Print code: N(8), 01, P

Pack:1 - Carton: 50





8400 VITARA

Multi-pocket shorts.

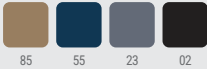
- Stretch fabric.
- Elasticated waistband on the back with belt loops.
- Two side pockets.
- Two gusseted cargo pockets with flap and Velcro closure.
- Two back pockets with flap and Velcro closure.
- Two front pleats below the front belt loops.
- Outer Roly WRK label.

S - M - L - XL - 2XL - 3XL

65% polyester / 33% cotton / 2% elastane, twill, 250 gsm.

Print code: N(8), O1, P

Pack:1 - Carton: 50



9005 RINGO

Shorts in stretch fabric.

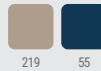
- Waistband with 5 belt loops.
- Two side welt pockets along the seam.
- Two back welt pockets.
- Decorative hem with reinforced stitching.
- Outer Roly WRK label.

38 - 40 - 42 - 44 - 46 - 48 - 50 - 52

97% cotton / 3% elastane, 290 gsm.

Print code: N(8), O1, P

Pack:1 - Carton: 30



6715 AMAZONAS

Multi-pocket shorts.

- Elasticated waistband on the sides with belt loops.
- Two side pockets.
- Two gusseted cargo pockets with flap and Velcro closure.
- Two back welt pockets with button.
- Outer Roly WRK label.

S - M - L - XL - 2XL - 3XL

100% cotton, 200 gsm.

Print code: N(8), O1, P

Pack:1 - Carton: 50





6703 NIVUS

Multi-pocket denim shorts.

- Durable stretch fabric.
- Waistband with belt loops.
- Two front hip pockets with a coin pocket on the right.
- Two back pockets.
- Right-leg cargo pocket with flap and Velcro closure.
- Integrated pocket with zip on the cargo.
- Elongated multi-purpose pocket on the left leg.
- Outer Roly WRK label.

36 - 38 - 40 - 42 - 44 - 46 - 48 - 50 - 52 - 54 - 56 - 58 - 60

78% cotton, 20% polyester, 2% elastane, 370gsm (11oz)

Print code: 02, N(2), P

Pack:1 - Carton: 30



143





NEW

9102 PINTOR

Long trousers.

- Durable fabric.
- Elasticated waistband on the back with belt loops.
- Two pleats under the two front belt loops.
- Two front hip pockets.
- A back plated pocket.
- A cargo pocket with flap and Velcro closure on the left leg.
- Elongated right leg pocket for tools.
- Outer Roly WRK label.

38 - 40 - 42 - 44 - 46 - 48 - 50 - 52 - 54 - 56 - 58 - 60

80% polyester / 20% cotton, 200 gsm.

Print code: N(8), O, P, R

Pack:1 - Carton: 25



01



9109 PATROL

Multi-pocket work trousers.

- Stretch fabric.
- Five tool belt loops.
- Side hip pockets.
- A pocket on the back with invisible snap closure.
- Elasticated back waistband.
- Invisible zip pockets on the sides.
- Knee pleats for a better fit and improved movement.
- PVC adjusters on the ankles.

36 - 38 - 40 - 42 - 44 - 46 - 48 - 50 - 52 - 54 - 56 - 58 - 60

90% polyester / 10% elastane, 235 gsm.

Print code: N(8), O, P

Pack:1 - Carton: 25



55

46

02





DAILY _NEXT

9200 DAILY NEXT

Multi-pocket long trousers.

- Durable fabric.
- Elasticated waistband on the back with belt loops.
- Two pleats under the two front belt loops.
- Two front hip pockets.
- One back patch pocket with flap and Velcro closure on right side.
- Right-leg cargo pocket with flap and Velcro closure.
- Outer Roly WRK label.

38 - 40 - 42 - 44 - 46 - 48 - 50 - 52 - 54 - 56 - 58 - 60

80% polyester / 20% cotton, 210 gsm.

Print code: N(8), O, P

Pack:1 - Carton: 25





DAILY _WOMAN



DUO

9100 DAILY

Multi-pocket long trousers.

- Durable fabric.
- Elasticated waistband on the back with belt loops.
- Two pleats under the two front belt loops.
- Reinforcement pieces on the knees.
- Two front hip pockets.
- Two back pockets with flap and Velcro closure.
- Two cargo pockets with flap and Velcro closure.
- Reinforced crotch panel.
- Outer Roly WRK label.

38 - 40 - 42 - 44 - 46 - 48 - 50 - 52 - 54 - 56 - 58 - 60

65% polyester / 35% cotton, 240 gsm.

Print code: N(8), O, P

Pack:1 - Carton: 25



DUO

9118 DAILY WOMAN

Women's multi-pocket long trousers.

- Durable fabric.
- Elasticated waistband on the back with belt loops.
- Two pleats under the two front belt loops.
- Reinforcement pieces on the knees.
- Two front hip pockets.
- Two back pockets with flap and Velcro closure.
- Two cargo pockets with flap and Velcro closure.
- Reinforced crotch panel.
- Outer Roly WRK label.

36 - 38 - 40 - 42 - 44 - 46 - 48

65% polyester / 35% cotton, 235 gsm.

Print code: N(8), O, P

Pack:1 - Carton: 25





5096 SAFETY

Multi-pocket long trousers.

- Durable fabric.
- Elasticated waistband on the back with belt loops.
- Two pleats under the two front belt loops.
- Reinforcement pieces on the knees.
- Two front hip pockets.
- One back patch pocket with flap and Velcro closure.
- Two plated pockets with flap and Velcro closure.
- Reinforced crotch panel.
- Outer Roly WRK label.

36 - 38 - 40 - 42 - 44 - 46 - 48 - 50 - 52 - 54 - 56 - 58 - 60

100% cotton, 240 gsm.

Print code: N(B), O, P

Pack:1 - Carton: 25



9108 PROTECT

Multi-pocket long trousers with custom metal button.

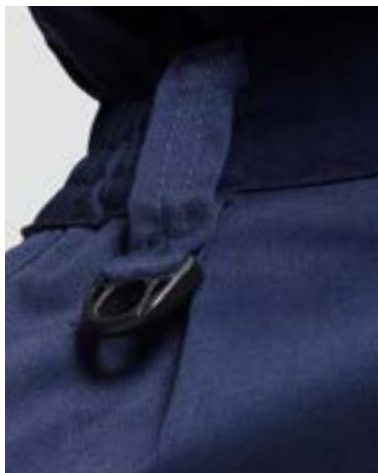
- Durable fabric, double reinforcement fabric on the knees.
- Elasticated waistband on the sides with belt loops, the one on the right with a plastic ring.
- Two front hip pockets with fabric piping.
- Inner pocket with zip inside the front right pocket.
- Two back pockets with two handles in matching fabric.
- A cargo pocket with flap and Velcro closure on the left leg and a handle in matching fabric.
- Multi-purpose pocket on the right leg.
- Outer Roly WRK label.

38 - 40 - 42 - 44 - 46 - 48 - 50 - 52 - 54 - 56 - 58 - 60

65% polyester / 35% cotton, 245 gsm.

Print code: N(B), O, P

Pack:1 - Carton: 25





PRO
_TECT

STRE TCH_





8407 DAILY WOMAN STRETCH

Multi-pocket long trousers.

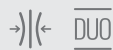
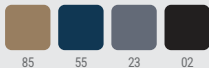
- Durable stretch fabric.
- Elasticated waistband on the back with belt loops.
- Two pleats under the two front belt loops.
- Two front hip pockets.
- Two back pockets with flap and Velcro closure.
- Two cargo pockets with flap and Velcro closure.
- Outer Roly WRK label.

36 - 38 - 40 - 42 - 44 - 46 - 48 - 50

65% polyester / 33% cotton / 2% elastane, 250 gsm twill.

Print code: N(8), O, P

Pack:1 - Carton: 25



9205 DAILY STRETCH

Multi-pocket long trousers.

- Durable stretch fabric.
- Elasticated waistband on the back with belt loops.
- Two pleats under the two front belt loops.
- Two front hip pockets.
- Two back pockets with flap and Velcro closure.
- Two cargo pockets with flap and Velcro closure.
- Outer Roly WRK label.

38 - 40 - 42 - 44 - 46 - 48 - 50 - 52 - 54 - 56 - 58 - 60

65% polyester / 33% cotton / 2% spandex, 250 gsm twill.

Print code: N(8), O, P

Pack:1 - Carton: 25







9207 WALL

Multi-pocket long trousers.

- Abrasion-resistant reinforced knee pads with access for protectors.
- Durable and stretch main fabric.
- Triple-stitched for extra strength.
- Waistband with extra wide belt loops for tool belts.
- Two front hip pockets with an inner zip pocket on the right.
- Two back welt pockets with zip.
- A cargo pocket with flap and Velcro closure on the left leg.
- Right-leg gusset pocket without flap.
- Reinforced crotch panel.
- Outer Roly WRK label.

36 - 38 - 40 - 42 - 44 - 46 - 48 - 50 - 52 - 54 - 56 - 58 - 60

Main fabric: 90% Polyester / 10% Elastane, 260 gsm
Knee pads: 100% polyester, 250 gsm

CE Self-certification according to the following standards:

En ISO 13688:2013+A1:2021

EN ISO 14404:2004+A1:2010

Class 1: Type 2

Print code: N(8), 0

Pack:1 - Carton: 20



46

02



9326 WARMOR

Multi-pocket long trousers.

- Durable and stretch fabric with fleece lining on the inside for warmth.
- Elasticated waistband on the back with belt loops.
- Two pleats below the two front belt loops.
- Two front hip pockets.
- Two back welt pockets with flap and Velcro closure.
- Two cargo pockets with flap and Velcro closure.
- Outer Roly WRK label.
- Wash cycles: x25

36 - 38 - 40 - 42 - 44 - 46 - 48 - 50 - 52 - 54 - 56 - 58 - 60

Main fabric: 65% polyester, 33% cotton, 2% elastane, 250 gsm

Lining: 100% polyester fleece, 140 gsm

Print code: 02, N(2), P

Pack:1 - Carton: 20



55

23

02





3.2

NEW YORK

NEW YORK

NEW

NEW_ WARMOR



9206 FONTA

Multi-pocket long trousers.

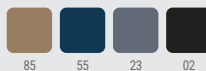
- Durable stretch fabric.
- Elasticated waistband on the sides with belt loops.
- Two front hip pockets and a coin pocket on the right side.
- Two back pockets: right patch pocket with flap and Velcro closure, left V-shaped pocket without flap.
- Left-leg cargo pocket with flap and Velcro closure and elongated tool pocket on right leg.
- Colour contrast bar-tack stitching.
- Outer Roly WRK label.

36 - 38 - 40 - 42 - 44 - 46 - 48 - 50 - 52 - 54 - 56 - 58 - 60

98% cotton, 2% elastane, 300 gsm.

Print code: N(8), O, P

Pack:1 - Carton: 25



85 55 23 02



FON _TA



8402 RAPTOR

Denim multi-pocket long trousers with slightly forward side seams.

- Durable stretch fabric.
- Waistband with belt loops.
- Two front hip pockets with a coin pocket on the right.
- Two back pockets.
- Right-leg cargo pocket with flap and Velcro closure.
- Integrated pocket with zip on the cargo.
- Elongated multi-purpose pocket on the left leg.
- Outer Roly WRK label.

36 - 38 - 40 - 42 - 44 - 46 - 48 - 50 - 52 - 54 - 56 - 58 - 60

78% cotton / 20% polyester / 2% elastane, 370 gsm (11oz).

Print code: N

Pack:1 - Carton: 20



143



RAPTOR



JIM
MY_





8401 JIMMY

Raglan long-sleeved work overalls.

- Two-way front zip.
- Elasticated waistband at the back.
- 1x1 ribbed cuffs.
- Left chest pocket with zip.
- Side patch pockets.
- Outer Roly WRK label.

S - M - L - XL - 2XL - 3XL

65% polyester / 35% cotton, twill, 200 gsm.

Pack:1 - Carton: 20



07 65 55 52 23 02

CHOOSE YOUR FAVOURITE COMBINATION





0260



2331



2302



5505

// 8414 ARMADA



// 8411 EXPEDITION



// 8410 SAMURAI



// 8409 TAHOE



// 8413 MAVERICK



// 8412 TERRANO



// 8408 TROOPER



8411 EXPEDITION

Short-sleeved t-shirt.

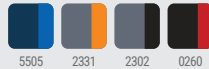
- Overlapping contrasting pieces on the shoulders.
- Contrasting taped neckline.
- Outer Roly WRK label.

S - M - L - XL - 2XL - 3XL

60% cotton / 40% polyester, single jersey, 160 gsm.

Print code: F(6), N(8), 01, P

Pack:1 - Carton: 50



5505 2331 2302 0260



8410 SAMURAI

Short sleeved polo shirt.

- Overlapping contrasting pieces on the shoulders.
- Taped neckline.
- 1x1 rib on collar and sleeves with contrasting colour detail.
- Placket with 2 snap buttons, one hidden and the other with colour contrast.
- Outer Roly WRK label.

S - M - L - XL - 2XL - 3XL

100% polyester piqué, 160 gsm.

Print code: F(6), N(8), 01, P

Pack:1 - Carton: 50



5505 2331 2302 0260



COMBIANTION GARMENTS_



COMBINATION GARMENTS_



8413 MAVERICK

3/4 zip sweatshirt..

- Overlapping contrasting pieces on the shoulders.
- Contrasting taped neckline.
- Contrasting zip.
- Tone-on-tone 1x1 rib cuffs with piece of matching fabric as the shoulder pieces.
- Outer Roly WRK label.

S - M - L - XL - 2XL - 3XL

50% cotton / 50% polyester, brushed fleece, 280 gsm.

Print code: F2(6), N(8), O3, P

Pack:1 - Carton: 25



8412 TERRANO

Fleece jacket.

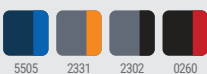
- Contrasting colour front zip.
- Overlapping contrasting pieces on the shoulders.
- Contrasting taped neckline.
- Side pockets inserted into side panel seams.
- Cuffs with elastic edging matching the tone of the shoulder pieces.
- Elastic adjusters on the inside of the waistband.
- Outer Roly WRK label.

S - M - L - XL - 2XL - 3XL

100% microfleece polyester, 220 gsm.

Print code: N(8), O2, P

Pack:1 - Carton: 15





COMBINATION VEST_



8414 ARMADA

Padded multi-pocket work vest with extended back.

- Front zip with placket and velcro closure.
- Overlapping contrasting pieces on the shoulders.
- Multi-purpose right chest pocket.
- Two front double-access pockets (side and top) with gusset and contrasting flap.
- Zip pocket on the right side.
- Elasticated adjustable armholes.
- Adjustable flaps on the sides with snap buttons.
- Interior left pocket with velcro closure.
- Outer Roly WRK label.

S - M - L - XL - 2XL - 3XL

80% polyester / 20% cotton, twill, 370 gsm.

Print code: N(8), O2, P

Pack:1 - Carton: 20



5505 2331 2302 0260



8409 TAHOE

Multi-pocket shorts.

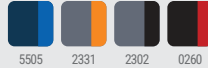
- Two pleats below the two front belt loops.
- Two front hip pockets with contrasting fabric piping.
- Two back patch pockets with contrasting flaps.
- Two cargo pockets with flap and contrasting Velcro closure.
- Outer Roly WRK label.

S - M - L - XL - 2XL - 3XL

65% polyester / 33% cotton / 2% elastane, twill, 250 gsm.

Print code: N(8), O1, P

Pack:1 - Carton:50



8408 TROOPER

Multi-pocket long trousers.

- Two pleats under the two front belt loops.
- Two front hip pockets with contrasting fabric piping.
- Two back patch pockets with contrasting flaps.
- Two cargo pockets with flap and contrasting Velcro closure.
- Outer Roly WRK label.

38 - 40 - 42 - 44 - 46 - 48 - 50 - 52 - 54 - 56 - 58 - 60

65% polyester / 33% cotton / 2% elastane, twill, 250 gsm.

Print code: N(8), O, P

Pack:1 - Carton:25





**COMFORTABLE AND HYGIENIC
GARMENTS FOR THE HEALTH
AND BEAUTY SECTORS. WIDE
RANGE OF COLOURS TO SUIT ALL
ENVIRONMENTS. FUNCTIONAL
AND RESISTANT.**



04_

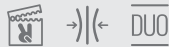
**SANITARY
& AESTHE
_TICS**

CONFORT & DESIGN_

DISCOVER OUR WIDE RANGE OF GARMENTS DESIGNED FOR WORK IN CLINICS, LABORATORIES AND BEAUTY CENTRES. EACH GARMENT HAS BEEN CAREFULLY MANUFACTURED WITH RIGOROUS ERGONOMIC STANDARDS IN MIND, TO PROVIDE YOU WITH MAXIMUM COMFORT AND FREEDOM OF MOVEMENT DURING YOUR WORKING DAY.



SERVICE TOP_



9085 FEROX

Short-sleeved scrub top.

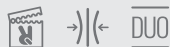
- Microfibre.
- V-neck with crossover neckline.
- Side panels.
- Two side pockets and one inner pocket on the right pocket.
- Side slits at the hem.
- Outer Roly WRK label.

S - M - L - XL - 2XL - 3XL

94% polyester / 6% elastane, 170 gsm microfibre.

Print code: F1(6), N2(8), N3(8), N4(8), O1, P

Pack:1 - Carton: 50



9084 FEROX WOMAN

Short-sleeved scrub top with slightly fitted waist.

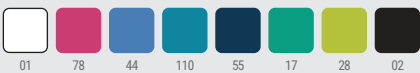
- Microfibre.
- V-neck with crossover neckline.
- Front and back seams.
- Two side pockets and one inner pocket on the right pocket.
- Side slits at the hem.
- Outer Roly WRK label.

XS - S - M - L - XL - 2XL - 3XL

94% polyester / 6% elastane, 170 gsm microfibre.

Print code: F1(6), N2(8), N3(8), N4(8), O1, P

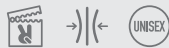
Pack:1 - Carton: 50







FIBER_



9086 FIBER

Scrub trousers with elasticated waistband.

- Adjustable drawstring in matching fabric.
- Microfibre.
- Two side hip pockets.
- V-neck pocket with Velcro closure on the right thigh.
- Two back V-shaped patch pockets.
- 1x1 ribbed cuffs at the ankles.
- Outer Roly WRK label.

S - M - L - XL - 2XL - 3XL

94% polyester / 6% elastane, 170 gsm microfibre.

Print code: N(8), O, P, R

Pack:1 - Carton: 50



01 78 44 110 55 17 28 02









9098 PANACEA

Unisex short-sleeved scrub top.

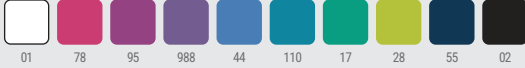
- V neck.
- Two side patch pockets and one on the left chest.
- Side slits at the hem.
- Outer Roly WRK label.

XS - S - M - L - XL - 2XL - 3XL

65% polyester / 35% cotton twill, 160 gsm.

Print code: F(6), N(8), O, P

Pack:1 - Carton: 50



9087 CARE

Scrub trousers with elasticated waistband.

- Adjustable drawstring in matching fabric.
- Two side pockets.
- Outer Roly WRK label.

XS - S - M - L - XL - 2XL - 3XL

65% polyester / 35% cotton, 195 gsm twill.

Print code: N(8), O, P

Pack:1 - Carton: 50



9097 VADEMECUM

Scrub trousers with elasticated waistband.

- Matching button and zip closure.
- Right patch pocket.
- Outer Roly WRK label.

XS - S - M - L - XL - 2XL - 3XL

65% polyester / 35% cotton twill, 160 gsm.

Print code: N(8), O, P

Pack:1 - Carton: 50





9094 VACCINE

Unisex lab coat with lapel.

- Front opening with tone-on-tone plastic buttons.
- Two front patch pockets.
- Left chest patch pocket.
- Back belt at waist level.
- Outer Roly WRK label.

XS - S - M - L - XL - 2XL - 3XL - 4XL

65% polyester / 35% cotton, 195 gsm.

Print code: F(6), N(8), O, P, R

Pack:1 - Carton: 50



9093 VACCINE WOMAN

Women's lab coat with lapel.

- Front opening with tone-on-tone plastic buttons.
- Two front patch pockets.
- Left chest patch pocket.
- Front seams.
- Back belt at waist level.
- Outer Roly WRK label.

XS - S - M - L - XL - 2XL

65% polyester / 35% cotton, 195 gsm twill.

Print code: F(6), N(8), O, P, R

Pack:1 - Carton: 50



9082 MACIL

Unisex healthcare cap.

- One size fits all.
- Back ties in matching fabric for adjustment.
- Outer Roly WRK label.

ONE SIZE

100% microfiber polyester, 150 gsm.

Print code: F(6), N(8), O, P, R

Pack:5 - Carton: 300







9105 ALDANY

Sleeveless service overall.

- Available in solid or contrast version with sublimated side panels.
- Hidden front placket with anti-rust snap buttons.
- Mandarin collar.
- Two slanted hip patch pockets.
- Outer Roly WRK label.

XS - S - M - L - XL - 2XL - 3XL

100% polyester, 130 gsm.

Print code: F(6), N(8), O, P, R

Pack:1 - Carton: 50





CHOOSE
YOUR STYLE_

ROLYWRK FOOD INDUSTRY

UNIFORMS, FOR PROFESSIONALS

DEDICATED TO FOOD HANDLING AND

PACKAGING PROCESSES. GOWNS,

CAPS, CAPS AND EVERYTHING

NECESSARY FOR THE SECTOR.



05_

**FOOD
INDUSTRY**



HYGIENE & PROTECTION_

**IN THIS COLLECTION YOU WILL FIND
UNIFORMS SPECIALLY DESIGNED FOR
PROFESSIONALS DEDICATED TO FOOD
HANDLING AND PACKAGING PROCESSES.**

**OUR POLO SHIRTS, COATS, TROUSERS
AND CAPS ARE MADE WITH ATTENTION
TO DETAIL, GUARANTEEING MAXIMUM
PROTECTION AND COMFORT DURING
LONG WORKING DAYS.**



FOOD INDUSTRY POLO-SHIRTS_



8403 ROVER

Short-sleeved piqué polo shirt.

- 1x1 ribbed collar and sleeves.
 - Placket with Velcro closure.
 - Neck tape in matching fabric.
 - Side slits.
-

S - M - L - XL - 2XL - 3XL - 4XL

100% cotton, piqué.

Colour: 200 gsm.

White: 210 gsm.

Print code: F(6), N(8), O1, P, Y

Pack:1 - Carton: 50



8404 ROVER L/S

Long-sleeved piqué polo shirt.

- 1x1 ribbed collar and cuffs.
 - Placket with Velcro closure.
 - Neck tape in matching fabric.
 - Side slits.
-

S - M - L - XL - 2XL - 3XL - 4XL

100% cotton piqué.

Colour: 200 gsm.

White: 210 gsm.

Print code: F(6), N(8), O1, P, Y

Pack:1 - Carton: 25









9091 ARZAK

Reversible bib apron.

- Piped edges.
- Side straps for adjusting to the waist.
- Front pocket with central dividing seam.

ONE SIZE

65% polyester / 35% cotton, 195 gsm twill.

Print code: F(6)

Pack:1 - Carton: 50



9092 MEDERI

Unisex lab coat with lapel.

- Front opening with metal anti-rust snap buttons hidden in the front cover.
- Inside left chest pocket.
- 1x1 ribbed cuffs.

XS - S - M - L - XL - 2XL - 3XL

80% polyester / 20% cotton, 195 gsm twill.

Print code: F(6), N(8), O, P, R

Pack:1 - Carton: 50



FOOD INDUSTRY ACCESSORIES_



9083 ATALA

Mesh kitchen cap.

- Unisex rubberised contour with visor.
- One size fits all.

ONE SIZE

Peak fabric: 65% polyester / 35% cotton, 200 gsm.
Mesh fabric: 100% polyester, 70 gsm.

Print code: N(8), O, P, R

Pack:10 - Carton: 200



01



55



17



02



9090 LAGASSE

Unisex mesh kitchen cap.

- Folded visor.
- One size fits all.

S - M - L

65% polyester / 35% cotton, 195 gsm twill.

Print code: N(8), O, P

Pack:10 - Carton: 300



01



02







9088 ROCHAT

Long trousers.

- Elasticated waistband.
- Inner pocket with velcro on the front right.

XS - S - M - L - XL - 2XL - 3XL

65% polyester / 35% cotton, 195 gsm twill.

Print code: N(8), O, P

Pack:1 - Carton: 50



01



55



**ROLY WRK UNIFORMS ARE
ESSENTIAL AND NECESSARY FOR
YOUR RESTAURANT, CAFETERIA
OR BUSINESS. COMFORTABLE
WORKWEAR FOR YOUR DAY-TO-DAY
WORK SUCH AS SHIRTS, TROUSERS,
APRONS AND KITCHEN JACKETS.**



05_

HORE
_CA

HORECA_

**WELCOME TO OUR WORKWEAR
SECTION DESIGNED ESPECIALLY FOR
JOBS IN THE HOSPITALITY, CATERING
AND CAFETERIA SECTORS.
COMBINE THEM WITH OUR DIFFERENT
MODELS OF SHIRTS AND APRONS
TO CREATE A COMPLETE AND
SOPHISTICATED OUTFIT.**





4500 DABIZ

Unisex cook's jacket.

- Right-crossed neckline with concealed snap buttons on front placket.
- Armholes and back in breathable fabric.
- Tailored sleeve with turned-up cuffs.
- Left sleeve patch pocket.
- Outer Roly WRK label.

XS - S - M - L - XL - 2XL - 3XL

Front fabric: 100% microfiber polyester, 150 gsm.

Back fabric: 100% bird's eye polyester, 135 gsm.

Print code: F(6), N(8), O2, P, R

Pack:1 - Carton: 50



01



02



CHEF'S
JACKET_

SO
_FIA





5503 AIFOS

Short-sleeved shirt.

- Classic shirt collar.
- Forward shoulder seams.
- Back yoke.
- Left chest pocket.
- Tone-on-tone button placket.
- Rounded hem.

S - M - L - XL - 2XL - 3XL

65 % polyester / 35% poplin cotton, 130 gsm.

Print code: N(8), 01, P

Pack:1 - Carton: 36



5061 SOFIA

Fitted women's short-sleeved shirt.

- Classic shirt collar.
- Forward shoulder seams.
- Front and back waist darts.
- Left chest pocket.
- Concealed tone-on-tone button placket.
- Rounded hem.

S - M - L - XL - 2XL - 3XL

65 % polyester / 35% poplin cotton, 130 gsm.

Print code: N(8), 01, P

Pack:1 - Carton: 36





5504 AIFOS L/S

Long-sleeved shirt.

- Classic shirt collar.
- Forward shoulder seams.
- Back yoke.
- Left chest pocket.
- Tone-on-tone button placket.
- Double-button cuffs with pleats and additional smaller button on cuff placket.
- Rounded hem.

S - M - L - XL - 2XL - 3XL

65% polyester / 35% poplin cotton, 130 gsm.

Print code: N(8), 01, P

Pack:1 - Carton: 36



5161 SOFIAL L/S

Fitted women's long-sleeved shirt.

- Classic shirt collar.
- Forward shoulder seams.
- Front and back waist darts.
- Left chest pocket.
- Concealed tone-on-tone button placket.
- Double-button cuffs with pleats on cuff placket.
- Rounded hem.

S - M - L - XL - 2XL - 3XL

65% polyester / 35% cotton, poplin, 130 gsm.

Print code: N(8), 01, P

Pack:1 - Carton: 36





MOS
_CU



→)(< NEW SIZE

5506 MOSCU

Long-sleeved shirt.

- Stretch fabric.
- Classic shirt collar.
- Forward shoulder seams.
- Back yoke.
- Tone-on-tone button placket.
- Double-button cuffs with pleats and additional smaller button on cuff placket.
- Rounded hem.

S - M - L - XL - 2XL - 3XL

97% poplin cotton / 3% spandex, 140 gsm.

Print code: N(8), 01, P

Pack:1 - Carton: 36



→)(< DUO

5505 MOSCU WOMAN

Fitted women's long-sleeved shirt.

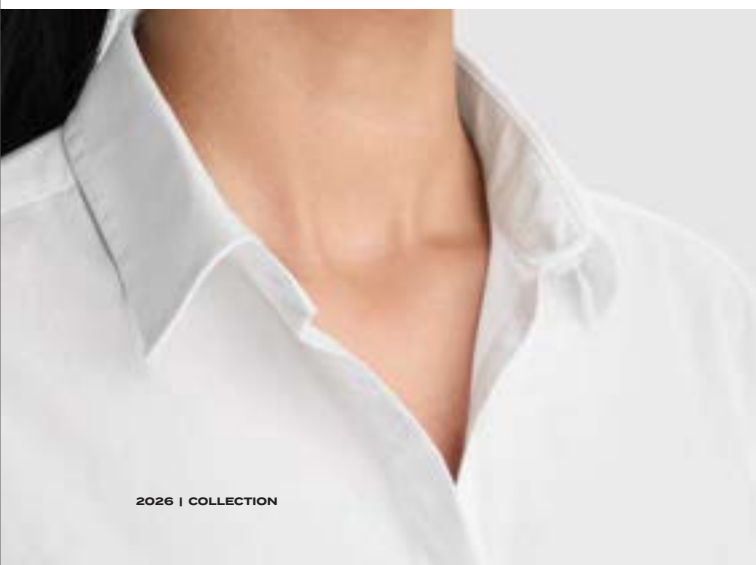
- Stretch fabric.
- Classic shirt collar.
- Forward shoulder seams.
- Chest darts on the front and waist on the back.
- Tone-on-tone button placket.
- Double-button cuffs with pleats and additional smaller button on cuff placket.
- Rounded hem.

S - M - L - XL - 2XL - 3XL

97% poplin cotton / 3% spandex, 140 gsm.

Print code: N(8), 01, P

Pack:1 - Carton: 36





OXFORD FABRIC_



DUO

5068 OXFORD WOMAN

Fitted women's long-sleeved shirt.

- Oxford fabric.
- Classic shirt collar.
- Forward shoulder seams.
- Front and back waist darts.
- Back yoke.
- Left chest pocket.
- Tone-on-tone button placket.
- Double-button cuffs with pleats and additional smaller button on cuff placket.
- Rounded hem.

S - M - L - XL - 2XL - 3XL

70% cotton / 30% polyester, Oxford fabric, 140 gsm.

Print code: N(8), O1, P

Pack:1 - Carton: 30



01 10



DUO

5507 OXFORD

Long-sleeved shirt.

- Oxford fabric.
- Classic shirt collar.
- Forward shoulder seams.
- Back yoke.
- Left chest pocket.
- Tone-on-tone button placket.
- Double-button cuffs with pleats and additional smaller button on cuff placket.
- Rounded hem.

S - M - L - XL - 2XL - 3XL

70% cotton / 30% polyester, Oxford fabric, 140 gsm.

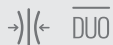
Print code: N(8), O1, P

Pack:1 - Carton: 30



01 10





6706 LUJAN

Long-sleeved denim shirt with adjustable sleeve tab.

- Stretch fabric.
- Shirt collar.
- Forward shoulder seams and back yoke.
- Left chest V-shaped pocket.
- Double-button cuffs with pleats and additional small button on cuff placket.
- Rounded hems.

S - M - L - XL - 2XL - 3XL

98% cotton, 2% elastane, 210gsm

Print code: 02, N(2), P

Pack:1 - Carton: 30

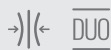


143

NEW



NEW



6707 LUJAN WOMAN

Women's long-sleeved denim shirt with adjustable sleeve tab.

- Stretch fabric.
- Slightly fitted waistband.
- Shirt collar.
- Forward shoulder seams and back yoke.
- Left chest V-shaped pocket.
- Double-button cuffs with pleats and additional small button on cuff placket.
- Chest and back darts.
- Rounded hems.

S - M - L - XL - 2XL - 3XL

98% cotton, 2% elastane, 210gsm

Print code: 02, N(2), P

Pack:1 - Carton: 30



143



160



HORECA



EXPLO _RER



8405 EXPLORER

Cardigan with front button fastening (5 tone-on-tone buttons).

- V neckline.
- Fine knit.
- Two patch pockets.
- Ribbed cuffs and hem.

S - M - L - XL - 2XL - 3XL

50% viscose / 28% polyester / 22% polyamide, fine knit, GG 12.

Print code: N(8), O2, P

Pack:1 - Carton: 25



55



8406 EXPLORER WOMAN

Women's cardigan with front button fastening (5 tone-on-tone buttons).

- V neckline.
- Fine knit.
- Two patch pockets.
- 1x1 ribbed cuffs and hem.

S - M - L - XL - 2XL - 3XL

50% viscose / 28% polyester / 22% polyamide, fine knit, GG 12

Print code: N(8), O2, P

Pack:1 - Carton: 25



55









8417 HILUX

V neck jumper.

- Fine knit.
- 1x1 ribbed cuffs and hem.

S - M - L - XL - 2XL - 3XL

50% viscose / 28% polyester / 22% polyamide, GG12

Print code: N(8), O1, P

Pack:1 - Carton: 25



8418 HILUX WOMAN

Women's V neck jumper.

- Fine knit.
- 1x1 ribbed cuffs and hem.

S - M - L - XL - 2XL - 3XL

50% viscose / 28% polyester / 22% polyamide, GG12

Print code: N(8), O1, P

Pack:1 - Carton: 25





NEW VIVARO



8420 VIVARO

Unisex jacket with combined front zip.

- Padded front.
- Sleeves and back in brushed fleece.
- 1x1 rib cuffs and collar matching the tone of the garment.
- Side pockets with zip closure.

XS - S - M - L - XL - 2XL - 3XL

Main fabric: 85% polyester 15% cotton, 290 gsm

Padding: 100% polyester, 200 gsm

Secondary fabric: 100% polyamide, 70 gsm

Print code: P

Pack:1 - Carton: 15



219 55 23 380 02



NEW

BROCK _JEANS



8415 BROCK

Men's regular-fit denim jeans with a mid-rise waist. 5 belt loops. A zip fly with a metal button closure. Two side pockets and a coin pocket on the right and two angled back pockets.

38 - 40 - 42 - 44 - 46 - 48 - 50 - 52 - 54 - 56 - 58 - 60

78% cotton / 20% polyester / 2% elastane, 370 gsm.

Print code: N, O, P

Pack:1 - Carton: 20



143



8416 BROCK WOMAN

Women's regular fit jeans with a mid-rise waist. 5 belt loops. A zip fly with a metal button closure. Two side pockets and one coin pocket on the right side. Two angled back pockets.

36 - 38 - 40 - 42 - 44 - 46 - 48 - 50 - 52

78% cotton / 20% polyester / 2% elastane, 370 gsm.

Print code: N, O, P

Pack:1 - Carton: 20



143



168



HORECA







→|← DUO

9145 BEVERLY

Chino cut trousers.

- Tone-on-tone zip and button closure.
- Belt loops at the waist.
- Side seam pockets.
- Right coin pocket.
- Back welt pocket with button on right side.
- Reinforced stitching at front and back crotch.

38 - 40 - 42 - 44 - 46 - 48 - 50 - 52 - 54 - 56 - 58 - 60

70% polyester / 30% elastomultiester, 200 gsm.

Print code: N(8), O, P

Pack:1 - Carton: 25



06 55 02



→|← DUO

9146 BEVERLY WOMAN

Women's chino cut trousers.

- Tone-on-tone zip and button closure.
- Belt loops at the waist.
- Side seam pockets.
- Right coin pocket.
- Back welt pocket with button on right side.
- Reinforced stitching at front and back crotch.

36 - 38 - 40 - 42 - 44 - 46 - 48 - 50 - 52

70% polyester / 30% elastomultiester, 200 gsm.

Print code: N(8), O, P

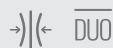
Pack:1 - Carton: 25



06 55 02



HILTON & RITZ_



9106 RITZ

Long trousers.

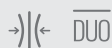
- Stretch fabric.
- Zip and button closure.
- Belt loops at the waist.
- Front hip pockets.
- Two back welt pockets with button.

38 - 40 - 42 - 44 - 46 - 48 - 50 - 52

97% cotton / 3% elastane, 280 gsm.

Print code: N(B), O1, P

Pack:1 - Carton: 20



9107 HILTON

Women's long trousers.

- Stretch fabric.
- Zip closure and custom metal button.
- Belt loops at the waist.
- Front hip pockets.
- Two back welt pockets with button.

36 - 38 - 40 - 42 - 44 - 46 - 48

97% cotton / 3% elastane, 280 gsm.

Print code: N, O, P

Pack:1 - Carton: 20



DUO

9250 WAITER

Waiter's trousers.

- Front and back pleats.
- Front hip pockets and coin holder.
- Back pocket on right side.
- Pleats on the two front belt loops.

38 - 40 - 42 - 44 - 46 - 48 - 50 - 52 - 54 - 56 - 58 - 60

100% polyester, 190 gsm.

Print code: N(8), O, P

Pack:1 - Carton: 25



02



DUO

9251 WAITRESS

Waitress trousers..

- Front and back pleats.
- Front hip pockets and coin holder.
- Back pocket on right side.

36 - 38 - 40 - 42 - 44 - 46 - 48 - 50

100% polyester, 190 gsm.

Print code: N(8), O, P

Pack:1 - Carton: 25



02







9123 CLASSIC

Short twill apron.

- Front pocket with double central seam that divides the pocket in two.
- Matching ribbons at the waist to adjust the apron.

ONE SIZE: 71 x 43 cm.

80% polyester / 20% cotton, 220 gsm twill.

Print code: F(6), N(8), O, P

Pack:1 - Carton: 50



02



9124 MINI

Short twill apron.

- Front pocket with central seam that divides the pocket in two and slanted side opening at the hip.
- Thin ribbons of the same fabric to adjust the waist.

ONE SIZE: 45 x 30 cm.

80% polyester / 20% cotton, 220 gsm twill.

Print code: F(6), N(8), O, P

Pack:1 - Carton: 100



02



9127 DACOSTA

Short denim apron.

- Two contrasting twill straps to adjust the waist.
- Front pocket with central seam that divides the pocket in two.
- Pen pocket on the right side.
- An internal pocket on the left side.
- Outer Roly WRK label.

ONE SIZE: 40 x 20,5 cm.

100% cotton, 250 gsm.

Print code: F(6), N(8), O, P, Y

Pack:1 - Carton: 50



143



HORECA ACCESSORIES_



9126 BATALI

Long denim apron.

- Contrast twill neck strap with metal button and three buttonholes for adjustment.
- Two contrasting twill straps to adjust the waist.
- Centre chest patch pocket.
- Front pocket with central seam that divides the pocket in two.
- Pen pocket on the right side.
- An internal pocket on the left side.
- Outer Roly WRK label.

ONE SIZE: 98 x 92 cm.

100% cotton, 250 gsm.

Print code: F(6), N(8), O, P, Y

Pack:1 - Carton: 50



143





9139 BOST

Long recycled twill apron.

- Peach skin finish.
- Matching fabric neck strap with metal adjuster.
- Matching ribbons at the waist to adjust the apron.
- Front pocket with double central seam that divides the pocket in two.
- GRS certified.

65% recycled polyester / 35% recycled cotton, 250 gsm.

Print code: F(6), N(8), O, P

Pack:1 - Carton: 50



01 219 87 60 57 55 56 59 02



9125 BENOIT

Long twill apron.

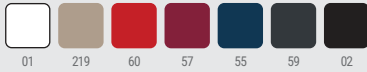
- Matching fabric neck strap with plastic adjuster.
- Matching ribbons at the waist to adjust the apron.
- Front pocket with central seam that divides the pocket in two.

ONE SIZE: 90 x 75 cm.

80% polyester / 20% cotton, 220 gsm twill.

Print code: F(6), N(8), O, P, R

Pack:1 - Carton: 50



9129 DUCASSE

Long poplin apron.

- Fixed polyester neck strap.
- Polyester ribbons at the waist to adjust the apron.
- Front pocket.
- Elongated inner pocket.

ONE SIZE: 90 x 65 cm.

90% polyester / 10% cotton, 150 gsm.

Print code: F(6), N(8), O, P, R

Pack:10 - Carton: 100



9128 RAMSAY

Long twill apron.

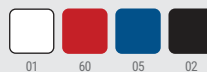
- Fixed neck strap in matching fabric.
- Ribbons at the waist to adjust the apron made of the same fabric..

ONE SIZE: 90 x 65 cm.

80% polyester / 20% cotton, 190 gsm.

Print code: F(6), N(8), O, P, R

Pack:50 - Carton: 100



**FUNCTIONAL, MULTI-PURPOSE
AND VERSATILE CLOTHING
FOR YOUR EVERYDAY LIFE.
READY FOR ALL SITUATIONS,
POLY WORKWEAR BASIC
CLOTHING ADAPTS TO YOU.
WIDE SELECTION OF COLOURS,
SIZES AND FABRICS TO SUIT
ALL NEEDS.**



07_

_BASICS

YOUR USUAL BASICS_

NO MATTER WHAT SECTOR YOU WORK IN,
WITH OUR COLLECTION OF BASICS YOU
CAN COMPLETE YOUR WORK WARDROBE
WITH GARMENTS THAT STAND OUT FOR
THEIR STRENGTH, FUNCTIONALITY AND
VERSATILITY.

MAKE SURE YOU HAVE EVERYTHING YOU
NEED FOR AN OPTIMAL PERFORMANCE
AT WORK, DISCOVER THE QUALITY
THAT MAKES THE DIFFERENCE IN YOUR
WORKING DAY.





6681 STAFFORD

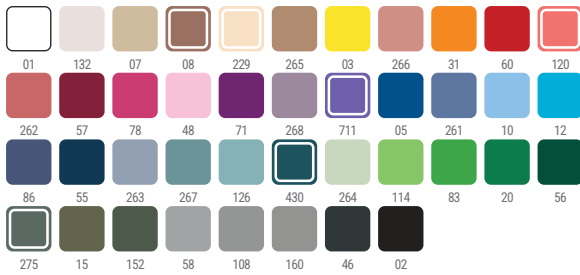
Tubular short-sleeved t-shirt in adult sizes and with side seams in kid's sizes. 1x1 ribbed round neck. Taped neckline in matching fabric.

S - M - L - XL - 2XL - 3XL - 4XL - 5XL

100% cotton, single jersey, 190 gsm.
Heather grey colour (58): 85% cotton / 15% viscose.

Print code: F(6), N2(8), N3(8), N4(8), O1, P, Y3, Y4

Pack:5 -Carton: 50



6683 CAPRI

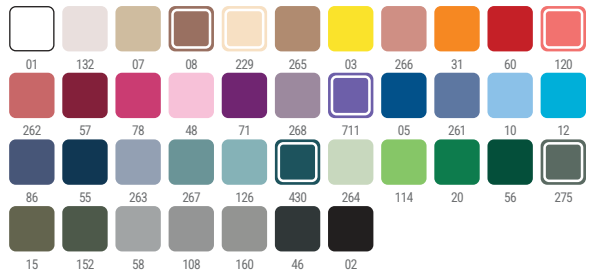
Fitted short-sleeved T-shirt with a tapered waist. 1x1 ribbed round neck. Taped neckline in matching fabric.

S - M - L - XL - 2XL - 3XL

100% cotton, single jersey, 170 gsm.
Heather grey colour 58: 85% cotton / 15% viscose.

Print code: F(6), N2(8), N3(8), N4(8), O1, P, Y3

Pack:5 -Carton: 50



6502 DOGO PREMIUM

Short sleeve t-shirt with side seams. 1x1 ribbed round neck (4 layers). Taped neckline in matching fabric.

S - M - L - XL - 2XL - 3XL - 4XL - 5XL

100% cotton, single jersey, 165 gsm.
Heather grey 58: 85% cotton / 15% viscose.

Print code: F(6), N2(8), N3(8), N4(8), O1, P, Y3, Y4

Pack:5 -Carton: 100



6503 SAMOYEDO

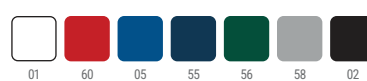
tubular short-sleeved t-shirt. V-neck in 1x1 ribbed. Taped neckline in matching fabric.

S - M - L - XL - 2XL - 3XL

100% cotton, single jersey 155 gsm.
Heather grey 58: 85% cotton / 15% viscose.

Print code: F(6), N2(8), N3(8), N4(8), O1, P, Y3, Y4

Pack:5 -Carton: 100





BASIC T-SHIRTS_



BASIC T-SHIRTS_



6554 BEAGLE

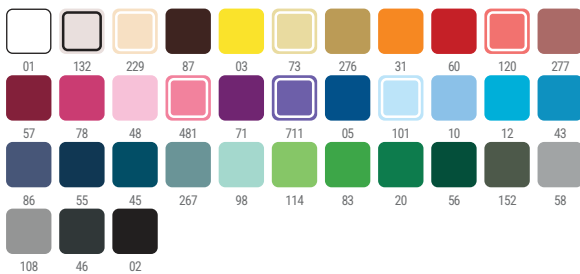
Tubular short-sleeved t-shirt in adult sizes and with side seams in kid's sizes. 1x1 ribbed round neck. Taped neckline in matching fabric.

XS - S - M - L - XL - 2XL - 3XL - 4XL - 5XL

100% cotton, single jersey, 155 gsm.
Heather grey 58: 85% cotton / 15% viscose.

Print code: F(6), N2(8), N3(8), N4(8), O1, P, Y2, Y3, Y4

Pack:5 -Carton: 100



6597 BALI

fitted short-sleeved t-shirt with elastane and a tapered waist. Round neckline with matching fabric trim.

S - M - L - XL - 2XL

95% cotton / 5% elastane, single jersey, 200 gsm.

Print code: F(6), N2(8), N3(8), N4(8), O1, P, Y3, Y4

Pack:5 -Carton: 100



6627 JAMAICA

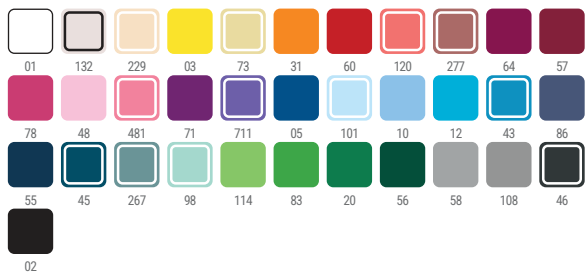
Fitted short-sleeved T-shirt with a tapered waist. 1x1 ribbed round neck. Taped neckline in matching fabric.

S - M - L - XL - 2XL - 3XL

100% cotton, single jersey, 155 gsm.
Heather grey 58: 85% cotton / 15% viscose.

Print code: F(6), N2(8), N3(8), N4(8), O1, P, Y2, Y3, Y4

Pack:5 -Carton: 100



6523 TECKEL

Short sleeve t-shirt with side seams. 1x1 ribbed round neck (4 layers). Taped neckline in matching fabric. Left chest pocket.

S - M - L - XL - 2XL - 3XL

100% cotton, single jersey, 160 gsm.
Heather grey 58: 85% cotton / 15% viscose.

Print code: F(6), N2(8), N3(8), N4(8), O1, P, Y3, Y4

Pack:5 -Carton: 100





6660 FOX

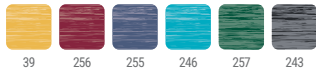
Tubular short-sleeved T-shirt with heather finish. 1x1 ribbed round neck. Taped neckline in matching fabric.

S - M - L - XL - 2XL - 3XL

65% polyester / 35% cotton, single jersey, 150 gsm.

Print code: F1(6), N2(8), N3(8), N4(8), O1(8), P(8)
100

Pack:5 -Carton:



6661 FOX WOMAN

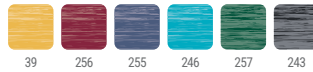
Slightly fitted short-sleeved t-shirt at the waist. 1x1 ribbed round neck. Taped neckline in matching fabric.

S - M - L - XL - 2XL

65% polyester / 35% cotton, single jersey, 150 gsm.

Print code: F1(6), N2(8), N3(8), N4(8), O1(8), P(8)
100

Pack:5 -Carton:



6532 BELICE

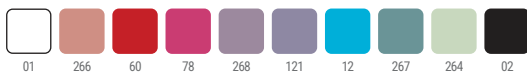
Fitted short-sleeved T-shirt with a tapered waist. Combed Cotton. V-neck with interfacing and matching sleeve trim. Taped neckline in matching fabric.

S - M - L - XL - 2XL - 3XL

94% combed cotton / 6% elastane, single jersey, 200 gsm.

Print code: F(6), N2(8), N3(8), N4(8), O1, P, Y3, Y4

Pack:5 -Carton: 50



6646 VICTORIA

Fitted short-sleeved T-shirt with a tapered waist. 1x1 ribbed V-neck. Taped neckline in matching fabric.

S - M - L - XL - 2XL - 3XL

100% cotton, single jersey, 155 gsm.

Print code: F(6), N2(8), N3(8), N4(8), O1, P

Pack:5 -Carton: 100





6689 HUSKY

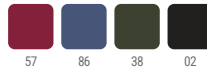
Short-sleeved T-shirt with side seams and a washed effect. Combed Cotton. 1x1 ribbed round neck. Taped neckline in matching fabric. Double seams on the sides and armholes. Decorative stitching on sleeves and hem with reinforced hem details.

S - M - L - XL - 2XL

100% cotton, single jersey, 160 gsm.

Print code: F(6), N2(8), N3(8), N4(8), O1, P, Y3, Y4

Pack:1 -Carton: 50



6691 HUSKY WOMAN

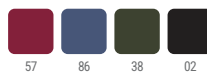
Short-sleeved t-shirt with a slightly fitted waist and a washed effect. Combed Cotton. 1x1 ribbed round neck. Taped neckline in matching fabric. Double seams on the sides and armholes. Decorative stitching on sleeves and hem with reinforced hem details.

S - M - L - XL - 2XL

100% cotton, single jersey, 160 gsm.

Print code: F(6), N2(8), N3(8), N4(8), O1, P, Y3, Y4

Pack:1 -Carton: 50





O430 ESTORIL

Breathable short-sleeved technical t-shirt. Roly Control Dry. Anti-bacterial. Extended hem at the back. Forward side seams. Tone-on-tone crew neck and neck tape. GRS certified.

S - M - L - XL - 2XL - 3XL

100% recycled polyester, waffle interlock, 125 gsm

Print code: F(6), N(8), O1, P, R

Pack:5 -Carton: 50



O427 IMOLA

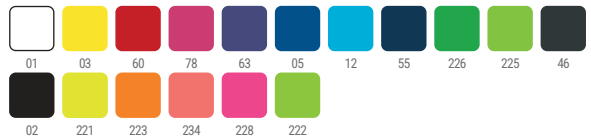
Breathable short-sleeved technical t-shirt. Recycled polyester. Roly Control Dry. Tone-on-tone crew neck and neck tape. Eco woven label. GRS certified.

S - M - L - XL - 2XL - 3XL

50% recycled polyester / 50% polyester, waffle interlock. 135 gsm.

Print code: F(6), N(8), O1, R

Pack:5 -Carton: 50



O431 ESTORIL WOMAN

Breathable fitted short-sleeved technical t-shirt. Roly Control Dry. Anti-bacterial. Extended hem at the back. Forward side seams. Tone-on-tone crew neck and neck tape. GRS certified.

S - M - L - XL - 2XL

100% recycled polyester, waffle interlock, 125 gsm

Print code: F(6), N(8), O1, P, R

Pack:5 -Carton: 50



O428 IMOLA WOMAN

Breathable fitted short-sleeved technical t-shirt. Recycled polyester. Roly Control Dry. Tone-on-tone crew neck with neck tape. ECO woven label. GRS certified.

S - M - L - XL - 2XL

50% recycled polyester / 50% polyester, waffle interlock. 135 gsm.

Print code: F(6), N(8), O1, R

Pack:5 -Carton: 50





O407 BAHRAIN

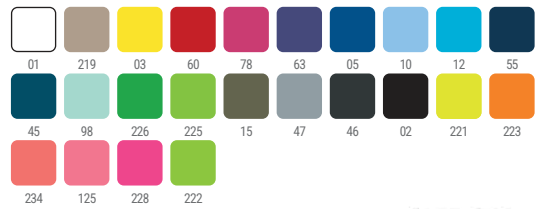
Breathable technical raglan-sleeved t-shirt. Roly Control Dry. Panels in armholes. Tone-on-tone crew neck with neck tape (UV-certified).

S - M - L - XL - 2XL - 3XL - 4XL

100% polyester, waffle interlock, 135 gsm.

Print code: F(6), N(8), O1, R

Pack:5 -Carton: 50



O408 BAHRAIN WOMAN

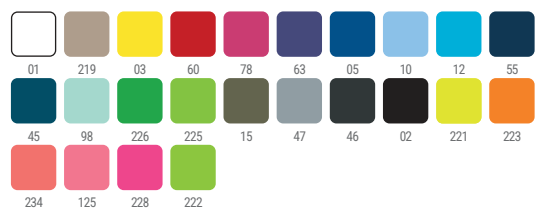
Breathable technical fitted raglan sleeved t-shirt. Roly Control Dry. Panels in armholes. Tone-on-tone crew neck with neck tape (UV-certified).

S - M - L - XL - 2XL

100% polyester, waffle interlock, 135 gsm.

Print code: F(6), N(8), O1, R

Pack:5 -Carton: 50







6617 PRINCE

Organic cotton short sleeved polo shirt with OCS certification. Piqué stitch. 1x1 woven collar and sleeves. 2-button placket. Taped neckline in matching fabric. Side slits at the hem. Pocket, optional. OCS certificate.

S - M - L - XL - 2XL - 3XL

100% organic cotton, 210 gsm.

Heather grey 58 colour: 85% organic cotton and 15% viscose.

Print code: F(6), N2(8), N3(8), N4(8), O1, P, Y3, Y4

Pack:5 -Carton: 50



6618 PRINCE WOMAN

Fitted short-sleeved polo shirt in organic cotton with OCS certification. Piqué stitch. 1x1 woven collar and sleeves. 2-button placket. Taped neckline in matching fabric, side slits at hem. OCS certificate.

S - M - L - XL - 2XL - 3XL

100% organic cotton, 210 gsm.

Heather grey colour 58: 85% organic cotton and 15% viscose

Print code: F(6), N2(8), N3(8), N4(8), O1, P, Y3, Y4

Pack:5 - Carton: 50





6609 PEGASO PREMIUM

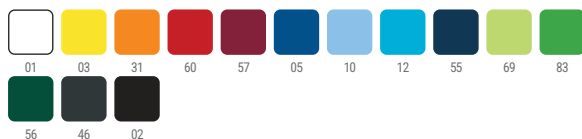
Short sleeved polo shirt with anti-pilling treatment. Piqué stitch. Neck and sleeves woven in 1x1 with embossed detail. 3-button placket. Taped neckline in matching fabric. Side slits at the hem. Pocket, optional. Washable at 60 °C.

S - M - L - XL - 2XL - 3XL - 4XL - 5XL

60% cotton / 40% polyester, piqué knit.
Colour: 190 gsm. White: 220 gsm.

Print code: F(6), N(8), 01, P, Y

Pack:5 -Carton: 50



6644 PEGASO WOMAN PREMIUM

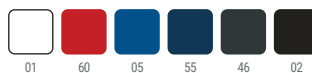
Fitted short-sleeved cotton polo shirt with anti-pilling treatment. Piqué stitch. Neck and sleeves woven in 1x1 with embossed detail. 3-button placket. Taped neckline in matching fabric. Side slits at the hem. Washable at 60 °C.

S - M - L - XL - 2XL - 3XL

60% cotton / 40% polyester, piqué knit.
Colour: 190 gsm.
White: 220 gsm.

Print code: F(6), N(8), 01, P, Y

Pack:5 -Carton: 50



6607 CENTAURO PREMIUM

Short sleeved polo shirt with left chest pocket and anti-pilling treatment. Piqué stitch. Neck and sleeves woven in 1x1 with embossed detail. 3-button placket. Taped neckline in matching fabric. Washable at 60 °C.

S - M - L - XL - 2XL - 3XL

60% cotton / 40% polyester, piqué knit.
Colour: 190 gsm.
White: 220 gsm.
Heather grey colour (58): 85% cotton / 15% viscose.

Print code: F(6), N(8), 01, P, Y

Pack:5 -Carton: 50







6632 AUSTRAL

Short sleeved cotton polo shirt. Piqué stitch. 1x1 woven collar. 3-button placket. Taped neckline in matching fabric.

S - M - L - XL - 2XL - 3XL

100% cotton, piqué, 180 gsm.

Print code: F(6), N2(8), N3(8), N4(8), O1, P, Y3, Y4

Pack:5 -Carton: 50



DUO

6634 STAR WOMAN

Fitted short-sleeved cotton polo shirt. Piqué stitch. 1x1 woven collar and sleeves. 3-button placket. Taped neckline in matching fabric. Side slits at the hem.

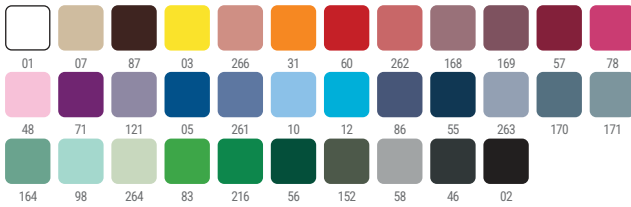
S - M - L - XL - 2XL - 3XL

100% cotton, piqué, 200 gsm.

Heather grey 58: 85% cotton, piqué / 15% viscose.

Print code: F(6), N(8), O1, P, Y

Pack:5 -Carton: 50



DUO

6638 STAR

Short sleeved cotton polo shirt. Piqué stitch. 1x1 woven neck and sleeves. 3-button placket. Taped neckline in matching fabric. Side slits at the hem. Optional pocket.

XS - S - M - L - XL - 2XL - 3XL - 4XL

100% cotton, piqué, 200 gsm.

Heather grey 58: 85% cotton, / 15% viscose.

Print code: F(6), N2(6), N3(6), N4(6), O1(6), P(6), Y3(6), Y4(6)

Pack:5 -Carton: 50





6441 WOS

Short-sleeved piqué polo shirt. 1x1 woven ornamental detailing at the neck and sleeves. 2-button placket. Taped neck in matching fabric. Side slits at the hem. Back slightly longer than the front.

S - M - L - XL - 2XL - 3XL - 4XL - 5XL

solid colours: 95% cotton, 5% elastane, 220 gsm

heather grey: 81% cotton, 14% viscose, 5% elastane, 220 gsm

Print code: F(1), O1, N(4), P

Pack:1 -Carton: 50



NEW



6629 MONTREAL

Short sleeved combed cotton polo shirt. Piqué stitch. Colour contrast 1x1 woven collar and sleeves. 3-button placket with colour contrast. Taped neckline in matching fabric. Side slits at the hem.

S - M - L - XL - 2XL

100% combed cotton, piqué knit, 230 gsm.

Print code: F(6), N(8), O1, P, Y

Pack:1 -Carton: 50





TECHNICAL POLO-SHIRT_



O404 MONZHA

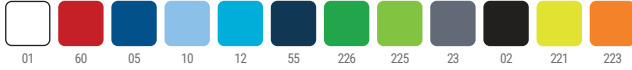
Technical, breathable, short-sleeved polo shirt. Tone-on-tone 1x1 rib collar. 3-button placket. Tone-on-tone neck tape. UV certified.

S - M - L - XL - 2XL - 3XL

100% polyester piqué, 150 gsm.

Print code: F(6), N(8), O1, P, R

Pack:1 -Carton: 50



O410 MONZHA WOMAN

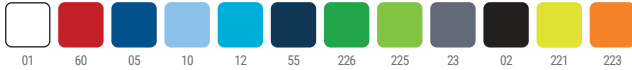
Technical, breathable, short-sleeved fitted polo shirt. Tone-on-tone 1x1 rib collar. 3-button placket. Tone-on-tone neck tape. UV certified.

S - M - L - XL - 2XL

100% polyester piqué, 150 gsm.

Print code: F(6), N(8), O1, P, R

Pack:1 -Carton: 50



O421 MONTMELO

Technical, two-tone, breathable, short-sleeved polo shirt. Side and armhole panels. Tone-on-tone 1x1 rib collar and cuffs with contrasting detail. Armhole trim in matching fabric. 3-button placket. Neck tape in matching fabric and contrast colour. UV certified.

S - M - L - XL - 2XL - 3XL

100% polyester piqué, 150 gsm.

Print code: F(6), N(8), O1, R

Pack:1 -Carton: 50





0402 TAMIL

Technical, two-tone, breathable, short-sleeved polo shirt. Anti-bacterial. Side slits. Contrast shoulder and armhole panels. Tone-on-tone 1x1 rib collar and cuffs with contrasting detail. Placket with snap buttons, one visible in contrast colour and one hidden inside the placket. Neck tape in matching fabric and contrast colour. GRS certified.

S - M - L - XL - 2XL - 3XL

50% recycled polyester / 50% antibacterial polyester. 140 gsm.
0102 colour: 150 gsm.

Print code: F1(6), N(8), O1, R, F(6), N(8), O1, P, R

Pack:1 -Carton: 50



0400 TORMO

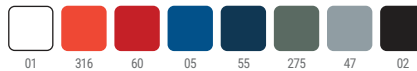
Technical, breathable, short-sleeved polo shirt. Roly Control Dry. Anti-bacterial. Forward side seams with vents. Tone-on-tone 1x1 rib collar and cuffs. Tone-on-tone snap button placket. Tone-on-tone neck tape. GRS certified.

S - M - L - XL - 2XL - 3XL

100% recycled polyester, waffle interlock, 125 gsm

Print code: F(6), N(8), O, P

Pack:1 -Carton: 50



0409 TAMIL WOMAN

Technical, breathable, short-sleeved fitted polo shirt. Anti-bacterial. Side slits. Contrast shoulder and armhole panels. Tone-on-tone 1x1 rib collar and cuffs with contrasting detail. Placket with snap buttons, one visible in contrast colour and one hidden inside the placket. Neck tape in matching fabric and contrast colour. GRS certified.

S - M - L - XL - 2XL

50% recycled polyester / 50% antibacterial polyester. 140 gsm.
0102 colour: 150 gsm.

Print code: F1(6), N(8), O1, R, F(6), N(8), O1, P, R

Pack:1 -Carton: 50



0401 TORMO WOMAN

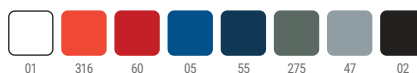
Technical, breathable, slim-fitting polo shirt. Roly Control Dry. Anti-bacterial. Forward side seams with vents. Tone-on-tone 1x1 rib collar and cuffs. Tone-on-tone snap button placket. Tone-on-tone neck tape. GRS certified.

S - M - L - XL - 2XL

100% recycled polyester, waffle interlock, 125 gsm

Print code: F(6), N(8), O, P

Pack:1 -Carton: 50







1217 EXTREME

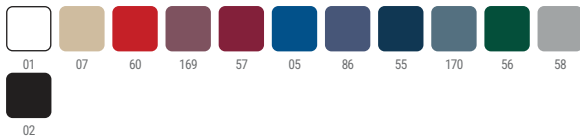
Tubular long-sleeved T-shirt in adult sizes and with side seams in kid's sizes. 1x1 ribbed round neck (4 layers). Taped neckline in matching fabric.

S - M - L - XL - 2XL - 3XL - 4XL

100% cotton, single jersey, 160 gsm.
Heather grey 58: 85% cotton / 15% viscose.

Print code: F1(6), N3(8), N4(8), O1, P, Y3, Y4

Pack:1 -Carton: 50



1218 EXTREME WOMAN

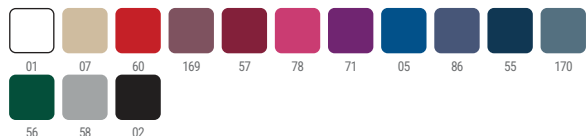
Fitted long-sleeved T-shirt with a tapered waist. Round neckline with matching fabric trim.

S - M - L - XL - 2XL - 3XL

100% cotton, single jersey, 160 gsm.
Heather grey 58: 85% cotton / 15% viscose.

Print code: F1(6), N3(8), N4(8), O1, P, Y3, Y4

Pack:1 -Carton: 50



1204 POINTER

Tubular long-sleeved T-shirt in adult sizes and with side seams in kid's sizes. 1x1 ribbed round neck and cuffs (4-layer neck). Taped neckline in matching fabric.

XS - S - M - L - XL - 2XL - 3XL - 4XL

100% cotton, single jersey, 165 gsm.
Heather grey 58: 85% cotton / 15% viscose.

Print code: F1(6), N3(8), N4(8), O1, P, Y3, Y4

Pack:1 -Carton: 50



1219 SHIBA

Long sleeved t-shirt with side seams. 1x1 ribbed round neck and cuffs. Taped neckline in matching fabric. Left chest pocket.

S - M - L - XL - 2XL - 3XL

100% cotton, 165 gsm.

Print code: F1(6), N3(8), N4(8), O1, P, Y3, Y4

Pack:1 -Carton: 50





CONTROL
DRY



O432 ESTORILL/S

Breathable technical long-sleeved t-shirt. Roly Control Dry. Anti-bacterial. Extended hem at the back. Forward side seams. Tone-on-tone crew neck and neck tape. GRS certified.

XS - S - M - L - XL - 2XL - 3XL

100% recycled polyester, waffle interlock, 125 gsm

Print code: F(6), N(8), O1, P, R

Pack:5 -Carton:50



01

316

60

05

55

275

47

02





6635 ESTRELLA L/S

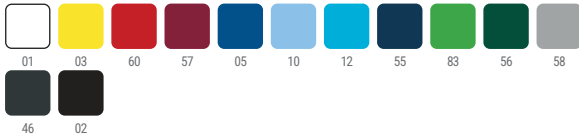
Cotton long sleeved polo shirt. Piqué stitch. 1x1 woven collar and cuffs. 3-button placket. Taped neckline in matching fabric. Pocket, optional.

S - M - L - XL - 2XL - 3XL - 4XL

100% cotton, piqué, 220 gsm.
Heather grey 58: 85% cotton / 15% viscose.

Print code: F(6), N(8), 01, P, Y

Pack:1 -Carton: 25



6636 ESTRELLA WOMAN L/S

Cotton long sleeved polo shirt. Piqué stitch. 1x1 woven collar and cuffs. 3-button placket. Taped neckline in matching fabric.

S - M - L - XL - 2XL - 3XL

100% cotton. Piqué, 220 gsm.
Heather grey 58: 85% cotton / 15% viscose.

Print code: F(6), N(8), 01, P, Y

Pack:1 -Carton: 25



5009 CARPE

Long sleeved polo shirt. Piqué stitch. 1x1 woven collar and cuffs. 3-button placket. Taped neckline in matching fabric. Side slits at the hem. Pocket, optional.

S - M - L - XL - 2XL - 3XL

65% polyester / 35% cotton piqué, 220 gsm.

Print code: F(6), N(8), 01, P, Y

Pack:1 -Carton: 25







1070 CLASICA

Unisex round neck sweatshirt. Neck, cuffs and waist in 2x1 rib with elastane. Taped seams in matching fabric.

XS - S - M - L - XL - 2XL - 3XL

50% cotton / 50% polyester, brushed fleece, 280 gsm.
Heather grey 58: 55% cotton / 40% polyester / 5% viscose.
Ash-White heather colour: 57% cotton / 42% polyester / 1% viscose

Print code: F3(6), N(8), O3, P

Pack:1 -Carton: 30



1117 TELENO

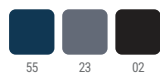
Unisex round neck sweatshirt. Neck, cuffs and waist in 2x1 rib with elastane. Taped seams in matching fabric.

XS - S - M - L - XL - 2XL - 3XL

100% cotton, 320 gsm.

Print code: F3(6), N(8), O3, P

Pack:1 -Carton: 30





UNISEX

NEW SIZE

1109 ANETO

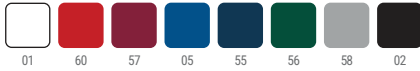
Unisex half zip and high neck sweatshirt. Tone-on-tone zip. 2x1 ribbed cuffs and waistband with elastane. Taped seams in matching fabric.

XS - S - M - L - XL - 2XL - 3XL

50% cotton / 50% polyester, brushed fleece, 280 gsm.
Heather grey 58: 55% cotton / 40% polyester / 5% viscose.

Print code: F3(6), N(8), O2, P

Pack:1 -Carton: 25



UNISEX

6439 ULAN

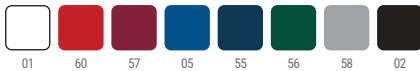
Unisex sweatshirt with front zip and high collar. Matching zip. Two side pockets with trim in matching fabric. Cuffs and waistband in 2x1 rib with elastane. Taped seams in matching fabric.

XS - S - M - L - XL - 2XL - 3XL

50% cotton / 50% polyester, brushed fleece, 280 gsm.
Heather grey colour (58): 55% cotton / 40% polyester / 5% viscose.

Print code: F3(6), N(8), O2, P

Pack:1 -Carton: 25



GILTED VEST_



5092 OSLO

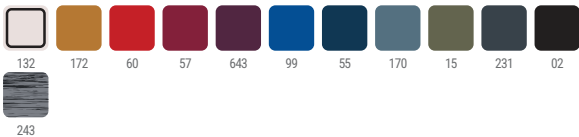
Waterproof padded vest. Tone-inverted front zip with chin guard of the same fabric. Side pockets with tone-inverted zips inserted into the side panels. Tone-inverted elastic piping in armholes and hem. Solid or contrasting colour lining options.

S - M - L - XL - 2XL - 3XL - 4XL

Shell: 100% polyester, 300T.
Lining: 100% polyester.
Wadding: 100% polyester, feather effect.
290 gsm.

Print code: P

Pack:1 - Carton: 10



5093 OSLO WOMAN

Waterproof padded vest. Tone-inverted front zip with chin guard of the same fabric. Side pockets with tone-inverted zips set into shaped side panels for a more tailored chest fit. Tone-inverted elastic piping in armholes and hem. Solid or contrasting colour lining options.

S - M - L - XL - 2XL

Shell: 100% polyester, 300T.
Lining: 100% polyester.
Wadding: 100% polyester, feather effect.
290 gsm.

Print code: P

Pack:1 - Carton: 10







FLEECE
VEST_



6438 QUEBEC

2-layer softshell vest with inverted front zip. Lined with microfleece fabric. Two side pockets and one right chest pocket with inverted zips. Chin guard in the same inverted fabric. Internal side adjusters.

XS - S - M - L - XL - 2XL - 3XL

Two layers. Shell: 92% polyester / 8% elastane. Lining: 100% extra warm microfleece polyester. 300 gsm.

Print code: N(8), O2, P

Pack:1 -Carton: 15



1199 NEVADA

2-layer softshell vest with contrast inverted front zip. Lined with microfleece fabric. Two side pockets and one left chest pocket with contrasting inverted zips. Chin guard in the same inverted fabric. Internal side adjusters.

S - M - L - XL - 2XL - 3XL

Shell: 92% polyester / 8% elastane.
Lining: 100% extra warm microfleece polyester., 300 gsm.

Print code: N(8), O2, P

Pack:1 -Carton: 15



6416 NEW BELLAGIO

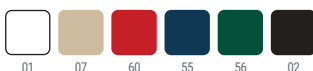
Fleece vest with front zip and high collar. Zip pockets integrated into the side panel seams. Taped seams with herringbone ribbon. All accessories in matching colours. Internal side adjusters.

S - M - L - XL - 2XL - 3XL

100% polyester, 300 gsm.

Print code: O2, N(4), P

Pack:1 -Carton: 15



NEW



6414 NEW ARTIC

Fleece jacket with front zip. High collar. Cuffs with elastic trim. Zip pockets integrated into side panel seams. Taped herringbone seams. Matching accessories. Inside side adjusters in adult sizes.

S - M - L - XL - 2XL - 3XL - 4XL

100% polyester, 300 gsm.

Print code: 02, N(4), P

Pack:1 - Carton: 15



1095 HIMALAYA

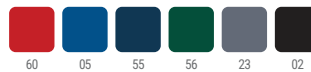
Half-zip microfleece sweatshirt with a high collar. Cuffs finished with elastic edging. Chin guard in the same fabric.

XS - S - M - L - XL - 2XL - 3XL

100% microfleece polyester, 155 gsm.

Print code: N(8), 02, P

Pack:1 - Carton: 25



6415 NEW ARTIC WOMAN

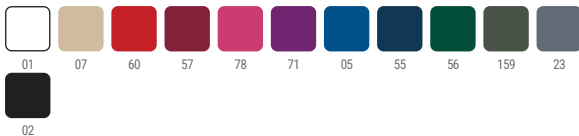
Woman's fleece jacket with front zip. High neck. Cuffs with elastic trim. Zip pockets integrated into side panel seams. Taped herringbone seams. Matching accessories. Internal side adjusters.

S - M - L - XL - 2XL

100% polyester, 300 gsm.

Print code: 02, N(4), P

Pack:1 - Carton: 15



1195 LUCIANE

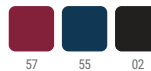
Fleece jacket with front zip. High collar and cuffs with elastic waistband. Left sleeve pocket with zip closure.

XS - S - M - L - XL - 2XL - 3XL

100% micro fleece polyester, 300 gsm.

Print code: N(8), 02, P

Pack:1 - Carton: 15





FLEECE JACKETS_





6436 NEBRASKA

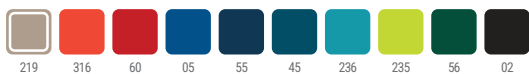
2-layer softshell jacket with inverted front zip. Lined with microfleece fabric. Two side pockets and one right chest pocket with inverted zips. Chin guard in the same inverted fabric. Inside side adjusters in adult sizes.

S - M - L - XL - 2XL - 3XL - 4XL

Two layers. Shell: 92% polyester / 8% elastane. Lining: 100% extra warm microfleece polyester. 300 gsm.

Print code: N(8), O2, P

Pack:1 -Carton: 15



6437 NEBRASKA WOMAN

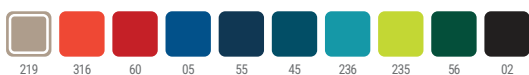
2-layer softshell jacket with inverted front zip. Fitted at the waist. Lined with microfleece fabric. Two side pockets and one right chest pocket with inverted zips. Chin guard in the same inverted fabric. Internal side adjusters.

S - M - L - XL - 2XL - 3XL

Two layers. Shell: 92% polyester / 8% elastane. Lining: 100% extra warm microfleece polyester. 300 gsm.

Print code: N, O2, P

Pack:1 -Carton: 15



6432 ANTARTIDA

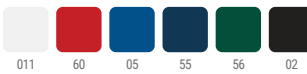
2-layer softshell jacket with contrast inverted front zip. Lined with microfleece fabric. Two side pockets and one left chest pocket with contrasting inverted zips. Chin guard in the same inverted fabric. Inside side adjusters in adult sizes.

S - M - L - XL - 2XL - 3XL

Two layers. Shell: 92 % polyester / 8% elastane. Lining: 100% extra warm microfleece polyester. 300 gsm.

Print code: N(8), O2, P

Pack:1 -Carton: 15



6433 ANTARTIDA WOMAN

2-layer softshell jacket with contrast inverted front zip. Fitted at the waist. Lined with microfleece fabric. Two side pockets and one left chest pocket with contrasting inverted zips. Chin guard in the same inverted fabric. Internal side adjusters.

S - M - L - XL - 2XL - 3XL

Two layers. Shell: 92 % polyester / 8% elastane. Lining: 100% extra warm microfleece polyester. 300 gsm.

Print code: N(8), O2, P

Pack:1 -Carton: 15





6435 RUDOLPH

3-layer softshell jacket with front zip. Lined with microfleece fabric. Two side pockets and one right chest pocket with zips and trimmed in the same fabric. Chin guard in the same fabric. Internal side adjusters.

S - M - L - XL - 2XL - 3XL

Three layers. Shell: 95% polyester / 5% elastane. Lining: 100% extra warm microfleece polyester. 300 gsm.

Print code: N(8), O2, P

Pack:1 -Carton: 15



6428 SIBERIA

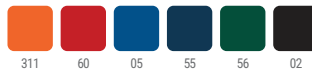
Unisex 2-layer softshell jacket with contrasting front zip. Lined with contrasting microfleece fabric. Two side pockets with invisible zip and pull. Small left sleeve pocket with invisible zip and pull. Chin guard in the same fabric. Matching elastic in the cuffs. Internal side adjusters. Removable hood with contrasting microfleece lining.

XS - S - M - L - XL - 2XL - 3XL

Two layers. Shell: 92% polyester / 8% elastane. Lining: 100% extra warm microfleece polyester. 300 gsm.

Print code: N(8), O2, P

Pack:1 -Carton: 15







PADDED
JACKETS_



5090 NORWAY

Waterproof padded hooded jacket. Tone-inverted front zip with chin guard in the same fabric. Side pockets with tone-inverted zips inserted into the side panels. Matching elastic trim on hood, cuffs, and hem. Option of solid or contrasting colours in the lining.

S - M - L - XL - 2XL - 3XL

Shell: 100% polyester, 300T.
Lining: 100% polyester.
Wadding: 100% polyester, feather effect.
290 gsm.

Print code: P

Pack:1 -Carton:10



5091 NORWAY WOMAN

Waterproof padded hooded jacket. Tone-inverted front zip with chin guard in the same fabric. Side pockets with matching inverted zips, set into shaped side panels for a more tailored chest fit. Matching elastic trim on hood, cuffs, and hem. Option of solid or contrasting colours in the lining.

S - M - L - XL - 2XL

Shell: 100% polyester, 300T.
Lining: 100% polyester.
Wadding: 100% polyester, feather effect.
290 gsm.

Print code: P

Pack:1 -Carton:10



5094 FINLAND

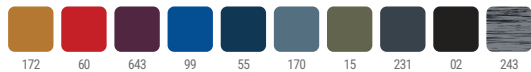
Waterproof padded jacket. Tone-inverted front zip with chin guard in the same fabric. Side pockets with tone-inverted zips inserted into the side panels. Tone-on-tone elasticated cuffs and hem. Option of solid or contrasting colours in the lining.

S - M - L - XL - 2XL - 3XL

Shell: 100% polyester, 300T.
Lining: 100% polyester.
Wadding: 100% polyester, feather effect.
290 gsm.

Print code: P

Pack:1 -Carton:10



5095 FINLAND WOMAN

Waterproof padded jacket. Tone-inverted front zip with chin guard in the same fabric. Side pockets with matching inverted zips, set into shaped side panels for a more tailored chest fit. Tone-on-tone elasticated cuffs and hem. Option of solid or contrasting colours in the lining.

S - M - L - XL - 2XL

Shell: 100% polyester, 300T.
Lining: 100% polyester.
Wadding: 100% polyester, feather effect.
290 gsm.

Print code: P

Pack:1 -Carton:10



WINTER JACKETS_



5079 MAKALU

Lightweight waterproof jacket with front zip. Chin protector. Removable hood with zip and elastic adjusters. Rubberized cuffs. Side pockets with zip and trimmed in the same fabric. Inner pocket on the left chest. Inner lining in matching microfleece.

S - M - L - XL - 2XL - 3XL

Shell: 100% polyester.
Padding: 100% polyester
Lining: 100% polyester, microfleece
330 gsm

Print code: N(8), O2, P Pack:1 -Carton: 10



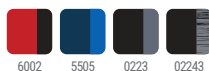
1120 MINSK

Raglan sleeve jacket and hood combined with two fabrics: the front and back in lightly padded taffeta, the sleeves, hood and side panels in polyester with a microfleece lining. Tone-on-tone side zip pockets inserted into side panels. Elastic trim on the hood and cuffs. Back with extended hem.

S - M - L - XL - 2XL - 3XL

Front and back: 100% polyester.
Wadding: 100% polyester, feather effect.
Sleeves: 100% interlock polyester.
290 gsm.

Print code: N(8), O1, P Pack:1 -Carton: 10



5080 NEPAL

Water-repellent padded parka with fixed hood and visor. Matching front zip with two-way puller. Chin guard in the same fabric. Elastic cuffs. Side pockets with matching zips. Inside left chest pocket. Interior access for personalization.

S - M - L - XL - 2XL - 3XL

Shell: 100% polyester, taffeta
Padding: 100% polyester
Lining: 100% polyester, taffeta
708 g/m²

Print code: P Pack:1 -Carton: 10







1108 YUKON

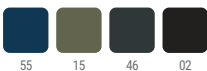
Waterproof padded jacket lined in microfleece. Matching front zip. Ribbed 1x1 cuffs and a rubberised waistband on the sides. Side pockets and one right chest pocket with matching zips covered by a placket of the same fabric. Interior access for personalization.

S - M - L - XL - 2XL - 3XL

100% waterproof polyester, 300 gsm.

Print code: N(8), O2, P

Pack:1 - Carton: 10



5707 EMIN

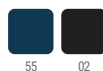
Padded thermal sports parka, certified for warmth. Reflective details on shoulders and back. Heat-sealed zips on the right and front of the chest. Two side pockets with zips covered by a main fabric placket. Inside pocket on the left side. Sleeves with Velcro closure and 1x1 ribbed adjustable cuff. Access point at the back for reprocessing. Fixed hood with adjusters. (EN 14058:2017).

XS - S - M - L - XL - 2XL - 3XL - 4XL

Main fabric: 78% polyester, 22% waterproof and breathable elastane. 3 layers and brushed on the inside.

Print code: O2, N(4), P

Pack:1 - Carton: 10



NEW DOME_



NEW



6704 DOME

3/4 quilted parka jacket featuring a high collar and removable zip hood. Two-way front zip covered by a flap with snap-button closure. Two side pockets with flaps and snap-button closures. Inner pocket with invisible zip closure. Access point at the back for personalization.

XS - S - M - L - XL - 2XL - 3XL - 4XL

Main fabric: 100% polyester laminated
TPU-lining: 100% polyamide-
Padding: 100% polyester, 380 gsm

Print code: 02, N(4), P

Pack:1 -Carton: 10



WATERPROOF PARKA



5072 AMERICA

Padded parka jacket with removable hood and elastic adjusters. Waterproof material. Matching front zip covered by a wide flap of the same fabric. Cuffs with Velcro adjuster. Side pockets with matching zips and covered by a matching fabric placket. Inside left chest pocket. Interior access for personalization. GRS certified.

S - M - L - XL - 2XL - 3XL

Exterior: 100% recycled polyester
Lining: 100% recycled polyester
Padding: 100% recycled polyester
400 gsm

Print code: N(8), O, P

Pack:1 - Carton:10



5073 AMERICA WOMAN

Padded parka jacket with removable hood and elastic adjusters. Waterproof material. Matching front zip covered by a wide flap of the same fabric. Side panels that gently shape the garment. Cuffs with Velcro adjuster. Side pockets with matching zippers covered by a matching fabric placket. Inside left chest pocket. Interior access for reprocessing. GRS certified.

S - M - L - XL - 2XL - 3XL

Exterior: 100% recycled polyester
Lining: 100% recycled polyester
Padding: 100% recycled polyester
400 gsm

Print code: N(8), O, P

Pack:1 - Carton:10





B

C



WATERPROOF RAINCOAT_



5201 SITKA

Waterproof raincoat with fixed hood and intergrated visor. Two-way front zip, side pockets and heat-sealed seams. Adjustable drawstring in hood. Rear opening. Interior access for reprocessing.

S - M - L - XL - 2XL - 3XL

100% polyester, PU, 210 gsm.

Print code: P

Pack:1 -Carton: 10



5202 SITKA WOMAN

Waterproof raincoat with fixed hood and intergrated visor slightly fitted at the waist. Two-way front zip, side pockets and heat-sealed seams. Adjustable drawstring in hood. Rear opening. Interior access for personalization.

S - M - L - XL - 2XL - 3XL

100% polyester, PU, 210 gsm.

Print code: P

Pack:1 -Carton: 10



WATERPROOF JACKET_



5074 ESCOCIA

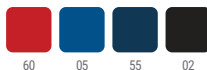
Waterproof jacket featuring a high collar and removable hood with adjustable drawstring. Silver-coated lining. Matching front zip. Side pockets with zippers covered by a flap in the same fabric. Stretchy cuffs. Hem with adjustable internal drawstring. Elastic strap inside pocket for folding and storage.

S - M - L - XL - 2XL - 3XL

Shell: 100% polyester, silver coating treatment, 70 gsm.

Print code: F(1)

Pack:1 - Carton: 50



5200 ISLAND

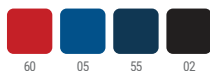
Waterproof jacket featuring a high collar and removable adjustable drawstring hood. Matching front zip. Side pockets with zippers covered by a flap in the same fabric. Stretchy cuffs. Hem with adjustable internal drawstring. Elastic strap inside the pocket for folding and storage.

S - M - L - XL - 2XL - 3XL

100% polyester taffeta, 70 gsm.

Print code: F(1)

Pack:1 - Carton: 50







0405 LEIRE

Women's full-length leggings with elastane. Elasticated waistband.

S - M - L - XL - 2XL

92% cotton / 8% elastane, single jersey, 270 gsm.
Heather grey 58: 81% cotton / 13% viscose / 6% elastane.

Print code: N(8), O, P

Pack:1 -Carton: 50



1090 BOX

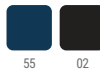
Women's straight-cut full-length leggings with elastane. Wide fitted waistband.

S - M - L - XL - 2XL - 3XL

90% cotton / 10% elastane, single jersey, 280 gsm.

Print code: N(8), O, P

Pack:1 -Carton: 50



NEW



6613 FLEXAR

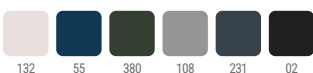
Joggers with elasticated waistband and cuffs. Round tone-on-tone drawstring inside part of the waistband. Side pockets and a single back welt pocket. Decorative darts at knee level.

XS - S - M - L - XL - 2XL - 3XL

81% cotton 18% polyester 1% elastane, 390 gsm.

Print code: 02, N(2), P

Pack:1 -Carton: 25





9110 BONATI

Unisex mountain trousers. Combination of two fabrics, one with elastane, in two colours. Snap button and zip closure. Side pockets with inverted zips and puller. Back pocket with inverted zip and puller. Belt loops. Elasticated waistband at the back. Elastic adjusters at the ankles. Knee pleats for improved ergonomics.

XS - S - M - L - XL - 2XL

Main fabric: 100% polyamide
Second fabric: 88% polyamide / 12% elastane

Print code: N(8), O, P

Pack:1 -Carton: 25



31146 5505 1546 0246 21946



0365 PRIME

Seamless thermal t-shirt. Body-hugging design. Round neckline in matching fabric.

3XS-2XS - XS-S - M-L - XL-2XL

92% polyamide / 8% elastane, 200 gsm.

Pack:1 -Carton: 50



01 03 60 05 55 226 02 221



0458 BETTER

Seamless thermal leggings. Body-hugging design. Reinforced waistband and ankles.

XS-S - M-L - XL-2XL

92% polyamide / 8% elastane, 240 gsm.

Print code: N(8), O

Pack:1 -Carton: 50



02

**COMPLETE YOUR PROFESSIONAL
GEAR WITH THE BEST
ACCESSORIES. DURABILITY AND
QUALITY DEFINE THE COLLECTION
OF CAPS, BACKPACKS, AND
TOOLS FROM ROLY WORKWEAR.
THE PERFECT COMPLEMENT FOR
YOUR PROFESSIONAL ACTIVITIES.**



08_

**ACCESSO
_RIES**



7008 PANEL

6-panel cap. 100% cotton. Contrasting sandwich. 6 vent eyelets and adjustable velcro fastening. Removable label.

100% cotton, 260 gsm.

Print code: N(8), O1, P

Pack:25 - Box: 200



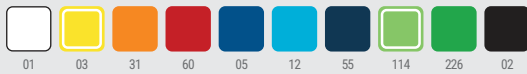
7019 ERIS

5-panel cap with contrasting sandwich and four embroidered vent eyelets. Adjustable velcro fastening and removable label. 100% cotton. 170 gsm.

100% cotton, 170 gsm.

Print code: F(1), N(8), O1, P

Pack:25 - Box: 200



1282 ISBUD

6-panel cap in recycled denim fabric. Vent eyelets.

Denim, 280 gsm

Print code: N(8), O1, P

Pack:25 - Box: 100



143



7041 URANUS

5-panel cap. 100% cotton. 170 gsm. Adjustable velcro fastening and embroidered vent eyelets. Removable label.

100% cotton, 170 gsm.

Print code: F(1), N(8), O1, P

Pack:25 - Box: 300



7033 BALDER

5-panel cap in 100% polyester with high-visibility details. Adjustable velcro fastening and vent eyelets. Removable label.

180 g/m²

Print code: F(1), N(8), O1, P

Pack:25 - Box: 200



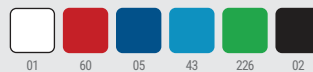
1470 FRED

5-panel cap in 100% cotton with adjustable fastening buckle and vent eyelets.

Cotton, 290 gsm

Print code: F(1), N(8), O1, P

Pack:25 - Box: 200



01

60

05

43

226

02

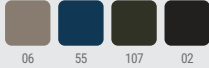


1815 KENIA

Safari beanie with ventilation opening on the sides. Adjustable strap.

Print code: F(1), N(8), O1, P

Pack:25/50 - Box: 100



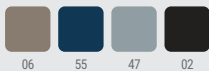
1631 ROSMAL

Double-layer beanie made of RPET polyester.

Recycled RPET polyester

Print code: N(8), O1, P

Pack:10 - Box: 200



9004 NANUK

Multifunction neckwarmer in a straight-cut and tubular design. 100% cotton touch polyester. 130 gsm.

100% polyester, cotton touch, 130 gsm.

Print code: N(8), O1, R2

Pack:25 - Box: 500



1813 AYORA

Waterproof bob hat made of microfiber. Adjustable elastic band on the back.

Print code: F(1), N(8), O1

Pack:25/50 - Box: 200



9009 PLANET

Knitted beanie with double turn-up on hem, ideal to be embroidered. 100% acrylic. Removable label.

100% acrylic. Weight: 40 gr.

Print code: N(8), O1, P

Pack:10 - Box: 200



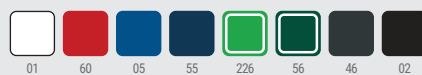
2009 NUKKA

Fleece neckwarmer with elastic adjuster. Wind-proof model. 100% fleece polyester. 210 gsm.

100% polyester, 210 gsm fleece.

Print code: G(1), N(8), O1, P, R1

Pack:10 - Box: 100





1521 MALONY

Sports backpack made of resistant 600D polyester. Padded back and shoulders. Wide variety of pockets, both in the front and inside. Velcro front area. Side adjusters. Anti-theft pocket on the back. Large capacity of 45 L.

600D Polyester

Print code: G(1), N1(8), O2, P

Pack:1 - Box: 10



1236 PATRIK

Executive backpack made of 300D RPET in a heather design. Body and main padded interior pocket for a 13" laptop or tablet. Triple compartment and side pockets. Padded shoulder straps and back. Trolley strap.

Bamboo

Print code: N1(8), O2, P

Pack:1 - Box: 15



1866 DAKOTA

Backpack made of 150D polyester. Main compartment with double pocket and padded divider for laptops up to 17". Includes interior pocket with zip. Hidden side pockets. Outer pocket with invisible zip. Trolley strap. Padded back and shoulder straps. Capacity: 28L.

Recycled PU

Print code: N(8), O

Pack:1 - Box: 20



1838 DONKER

600D polyester sports backpack. Two main compartments. Interior padded sleeve for a 16" laptop. Front compartment with zip closure. Mesh side pockets. Padded handles and back. Capacity: 23L.

Polyester

Print code: N(8), O, P

Pack:1 - Box: 20



1883 OREGON

Travel backpack made of PU leather. Padded back and shoulder straps. Front compartment with internal pockets. Small front pocket. Main compartment with mesh separator with zip. Special double compartment for carrying computers up to 15" and other devices. Adjustable dimensions thanks to its expandable zip. Trolley strap. Capacity: 30L

PU

Print code: N(8), O

Pack:1 - Box: 10



1783 HOBART

Multifunctional bag/backpack made of PU with 600D Ripstop polyester. Water resistant. Large main compartment with full opening. Multiple exterior pockets. Footwear compartment. Reinforced handle. All compartments have a waterproof zipper. Includes padded shoulder strap with backpack functionality.

RPET

Print code: G(1), N1(8), O2

Pack:1 - Box: 10



1354 BRUNEN

Backpack in PU leather. Main compartment with interior padded 15" laptop pocket. Front pocket. Padded back and shoulder straps.

PU Leather

Print code: N1(8), 02

Pack:1 - Box:15



1048 KUGAR

Extendable anti-theft backpack made of PU leather. Large main compartment and padded pocket for a 14" laptop. Padded exterior front pocket and side pockets. Padded shoulder straps and back. Trolley strap.

PU Leather

Print code: N1(8)

Pack:1 - Box:10



1526 FENATI

Multi-function backpack made of PU leather. Large main compartment with extendable opening and safety fastening. 18" interior padded pocket. Outer front pocket with waterproof zip fastening and two side pockets. Trolley strap. Capacity: 21 L.

PU Leather

Print code: N1(8)

Pack:1 - Box:15



1549 RAYAN

Extendable large capacity travel backpack made of PU leather. Padded back and handles. External front pocket with zip fastening. Main compartment with a 17" inner padded pocket. Anti-theft pocket on the left handle and on the back. Trolley strap. Capacity: 40 L.

Bamboo

Print code: N1(8)

Pack:1 - Box:10

LOCK



01 03 60 05 226

0108 LOCK

Cutter with wide blade and ABS body. Ergonomic die-cut grip and removable cap for the cutting and adjustment of the blade.

Plastic

Print code: C(2)

Pack:1/100 - Box: 500



60 05 251 02

1630 RAZER

Cutter with stainless steel blade and body made of recycled aluminium. Removable hood for cutting and adjusting the blade. Presentation in eco design box.

Recycled aluminium

Print code: C(2), L1

Pack:1/100 - Box: 400



01 03 60 05 226

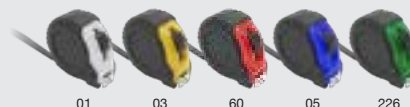
0105 RIVET

Approved 3 m flexometer with blocking mechanism and metallic strip hook. Body in colour rubber, metallic clip and carry strap. Presentation in individual box.

Sunshield: Aluminium and 50 gsm foam.
Edging: Non-woven.

Print code: E(1), V

Pack:1/10 - Box: 50



01 03 60 05 226

0106 PICK

Approved 5 m flexometer with blocking mechanism and metallic strip hook. Body in colour rubber, metallic clip and carry strap. Presentation in individual box.

Plastic

Print code: E(1), V

Pack:1/10 - Box: 50



1394 DECKER

25-accessory tool set. Cutter, hex wrench, star and flat screwdrivers, fixing tool and 100 cm measuring tape. Presentation in a cork case and an eco design box.

Print code: F(1), L1

Pack:1 - Box: 40



4127 TURNER

Tool set with 20 accessories included: screwdriver handle, interchangeable bits, socket adapter, interchangeable sockets, precision screwdrivers and box cutter.

Print code: F(2)

Pack:1 - Box: 30



8088 VETA

Oval-shaped carpenter pencil for easy marking. Unsharpened tip.

Wood

Print code: A(2)

Pack:100 - Box:1000



3991 BRICO

Aluminium multi-tool in the shape of a pen. 8 screwdriver heads, star and flat, included.

Aluminium

Print code: C(1), L1

Pack:1/50 - Box: 200



1492 PURIA

Stainless steel multi-tools with bamboo grip area. 5 functions: razor, saw, pliers, opener and screwdriver. Presentation in eco design box.

PU

Print code: E(2), L1

Pack:1/15 - Box: 60



3990 GOLIAT

Stainless steel jackknife with blade in black and grip in natural wood. Safety lock. Presentation in eco design box.

Stainless steel and natural wood

Print code: E(2), L1

Pack:1/10 - Box: 100



1559 LARSON

Magnetic and multifunction LED flashlight with opener and carabiner holder. 30 LED lights with 3 intensities and flashing modes. 330 lumens. 400 mAh rechargeable battery. Presentation in design box.

Aluminium

Print code: D(1), L2

Pack:1/50 - Box: 200



1557 VORO

Stainless steel knife with bamboo handle and carabiner.

Stainless steel and wood.

Print code: E(2), L1

Pack:1/20 - Box: 100



1248 DAGA

Multifunctional flashlight with hammer, glass breaker and seatbelt cutter functions. AAA battery included. Presentation in design box.

Aluminium

Print code: E(2), L2

Pack:1/50 - Box: 100



1773 NUMAN

Led lantern made of aluminium. 8 LEDs with 250 lumens. 3 intensities: Fixed, emergency and lateral with 100 lumens. Rechargeable 400 mAh battery. Includes type-C cable. Presentation in white box.

Aluminium

Print code: D(1), L1

Pack:1/50 - Box: 200



4075 MERLOT

01 116 02

Classic stainless steel corkscrew with double lever. Presentation in white box.

Stainless steel

Print code: D(1), L1

Pack:1/110 - Box: 200



1193 VUREN

Stylish stainless steel corkscrew with wooden grip. Presentation in eco design box.

Recycled aluminium

Print code: D(1), L1

Pack:1/10 - Box: 100



1891 PINGUX

Stainless steel and ABS electric corkscrew. Rechargeable battery. Includes type-C cable. Presentation in eco design box.

Stainless steel and ABS

Print code: F(1), L1

Pack:1 - Box: 30



1189 RICAL

Classic stainless steel corkscrew with bamboo grip. Presentation in eco design box.

Stainless steel and bamboo

Print code: D(1), L1

Pack:1/10 - Box: 100



1234 SAIPAN

Opener with stainless steel corkscrew in a classic design with bamboo grip. Presentation in eco design box.

Stainless steel and bamboo

Print code: D(2), L1

Pack:1/10 - Box: 100



NEW



9081 DARAK

Breathable protective mask.

- Adjustable stretch fabric.
- Multi-purpose accessory that adapts to different environments.

100% Polyester, 170gsm

Print code: F(2), O1, N(4), P

Pack:10 - Box: 250



01





1256 RUPER

Cooler backpack in heather design RPET polyester. Roomy main compartment with isothermal lining.

RPET

Print code: G(1), N1(8), 02

Pack:1 - Box: 20



7609 MARLOX

XL cooler bag made of RPET polyester in a heather design. Double compartment and front pocket. Isothermic lining. Adjustable carry strap included.

RPET

Print code: G(1), N(8), 01

Pack:1 - Box: 25



1194 KUNES

Multipurpose cooler bag made of 600D RPET. Isothermal interior compartments and practical exterior pockets. Adjustable padded shoulder strap with carabiner.

RPET

Print code: G(1), N1(8), 02

Pack:1 - Box: 20



1720 OZARK

Large format cooler made of 600D RPET. Front pocket and side pocket with zip closure. Isothermal interior. Adjustable carrying strap. Capacity: 8L

RPET

Print code: N1(8), 02

Pack:1/10 - Box: 30



09_

_INDEX

ICONOGRAPHY



NEW PRODUCT

This item is a new addition to this catalog.



NEW COLOUR

This icon indicates that the article is presented in a new colour in this catalogue.



NEW SIZE

Item with a new size in this catalogue. Indicates also which item it is.



BREATHABLE TECHNICAL FABRIC

Fabrics with breathability and comfort features specific for sports activities.



STRECH FABRIC

Fabric with elastane.



WATERPROOF

Fabric prepared to repel water, preventing it from trespassing to the garment.



WATER RESISTANT

Special treatment that minimizes the erosive effect of water on the fabric of the garment.



WINDPROOF

Fabric treatment that prevents the wind trespassing to the garment.



ADHESIVE LABEL

Vinyl label that can stick and peel off easily during the marking process.



REMOVABLE LABEL

This label can be removed without unpicking the covered seams.



UNISEX

Model suitable for both men and women.



DUO CONCEPT

This article has its equivalent for the other gender.



REVERSIBLE

Reversible garment.



OPTIONAL POCKET

Includes an optional pocket to be added in the garment.



HI-VIZ

Model with high-visibility properties that complies with EN 20471.



NIGHT VISIBILITY

Model with visibility properties that complies with EN 17353.



EN ISO 11611

Protection for use in welding



EN ISO 11612

Fireproof protection



PROTECTION AGAINST THERMAL

Hazards of an electric arc IEC 61482.



EN ISO 1149-05

Electrostatic protection



EN 14058

Protective clothing for cold environments.



EN 343

Protection against rain.



EN 14404

Personal protective equipment - Knee protectors for work in the kneeling position.





Protection against electrostatic discharges



Antistatic footwear



Energy absorption capacity in the heel



High insulation



Cold insulation



Resistance To contact heat



Water penetration and absorption



Slip resistant



Hydrocarbon resistant



Scuff cap



Waterproof



Ankle protection



Ladder grip



Puncture resistance



Metal free



QUALITY & COMMITMENT



ISO 9001: 2015

The world's most prestigious quality management standard. It certifies that our procedures are designed to ensure consistent products and services, optimizing efficiency and enhancing customer satisfaction with every delivery.



ISO 14001: 2015

The international benchmark in environmental management. It certifies our commitment to sustainability, the reduction of ecological impact, and continuous improvement in environmental protection, meeting the highest global standards.



ISO 45001: 2018

The highest international certification in occupational health and safety. It ensures that our organization applies the best practices to prevent risks, protect people, and create safe and healthy work environments.



ISO 28000: 2022

A global reference standard in supply chain security, this certification recognizes our ability to identify, control, and mitigate risks – ensuring safe and reliable logistics operations worldwide.



GOTS

Certified organic textile product. This certificate not only focuses on sustainable production but also sets standards and guidelines throughout the chain of custody of organic fibre. In addition to social and environmental requirements.



OCS 100

The OCS label certifies both the origin of raw materials and the organic content of the finished product, ensuring full traceability of raw materials throughout the manufacturing process. Products contain more than 95% certified organic fibres.



OCS BLEND

The OCS label certifies both the origin of raw materials and the organic content of the finished product, ensuring full traceability of raw materials throughout the manufacturing process. Products contain more than 5% certified organic fibres.



GRS. Certified by INTERTEK.

A certification that guarantees that the textile materials are recycled in accordance with environmental and social criteria.



RCS

This Textile Exchange certification verifies that a product contains a mixture of recycled and non-recycled materials, ensuring full traceability of recycled materials throughout the supply chain. It guarantees that a verified percentage of the product is made from certified recycled materials.



OEKO-TEX STANDARD 100

Certificate that ensures all environmental requirements have been met during the manufacturing process and that fabrics, dyes, and any components of the garment are free from harmful or dangerous substances.



OEKO-TEX ORGANIC

Certification guaranteeing that textile products are made from organic materials and have been evaluated to meet strict environmental and safety standards. It ensures sustainability across the entire production chain and the absence of harmful substances. (license number 2020K0383)



OEKO-TEX RECYCLED

Certification that verifies textile products contain a minimum required percentage of recycled materials and comply with strict sustainability and safety criteria. It ensures traceability and responsible use of recycled resources in production.



WCA Workplace Conditions Assessment

International benchmark assessment that verifies compliance with the highest standards in labour conditions, health and safety, environment, and responsible business practices. It recognizes our global commitment to creating safe, ethical, and sustainable workplaces.



COCACOLA BY INTERTEK

Social audit conducted by Intertek to assesses compliance with labour standards, human rights and working conditions, reinforcing globally recognized ethical practices under a methodology developed by the prestigious brand.



AEO Authorized Economic Operator

Customs accreditation that certifies reliability as an importer/exporter, facilitating international transit with fewer inspections and faster customs clearance.



FAIRTRADE

A global system that connects farmers and workers in producing countries with consumers and businesses worldwide – aiming to transform trade practices, improve working and living conditions, combat child labour, and protect the environment.



SGS ZERO WASTE

Internationally recognized certification that validates our ability to recover and reuse the waste generated in our processes. It endorses exemplary environmental management aligned with the principles of circular economy and global sustainability, transforming every waste into a resource.



MITECO y SGS VERIFICACIÓN

Carbon footprint. Independent verification by an international certification body confirming the precise calculation of our emissions and supporting real strategies to reduce our environmental impact.



PEFC

Program that promotes sustainable forest management to achieve a social, economic, and environmental balance. The paper used in this catalogue and most of our printed materials comes from sustainably managed forests.



REACH

European regulation designed to protect health and the environment from the risks of chemical substances. We comply with all restrictions and controls related to substances of very high concern in our products.



PETA APPROVED VEGAN

Global certification ensuring that our products contain no animal-derived materials or practices related to animal exploitation, offering ethical and 100% vegan alternatives.



SOCIAL INTEGRATION

A genuine commitment to the employment inclusion of people from disadvantaged groups – fully compliant with current legislation and actively promoting diverse, inclusive teams.



ILO

Adherence to the international principles of the Geneva Labour Convention and the ILO. We ensure an ethical and responsible supply chain, fully aligned with the prohibition of child labour and any form of exploitation.



SMETA 4 PILLARS

World-leading platform for ethical trade. It promotes audits and best practices that ensure responsible supply chains in labour rights, environmental protection, health, and business ethics.



CERYSON

PG_22



WRK FOOT _WEAR

REFERENCE INDEX

0105	RIVET	238	4127	TURNER	239	6691	HUSKY WOMAN	189
0106	PICK	238	4500	DABIZ	150	6703	NIVUS	92
0108	LOCK	238	5009	CARPE	204	6704	DOME	223
0365	PRIME	231	5061	SOFIA	153	6706	LUJAN	160
0400	TORMO	200	5063	SIRIO	63	6707	LUJAN WOMAN	160
0401	TORMO WOMAN	200	5067	ALMANZOR	88	6715	AMAZONAS	91
0402	TAMIL	200	5068	OXFORD WOMAN	159	6725	ARMOUR	90
0404	MONZHA	199	5072	AMERICA	224	7008	PANEL	234
0405	LEIRE	230	5073	AMERICA WOMAN	224	7019	ERIS	234
0407	BAHRAIN	191	5074	ESCOCIA	228	7033	BALDER	234
0408	BAHRAIN WOMAN	191	5079	MAKALU	220	7041	URANUS	234
0409	TAMIL WOMAN	200	5080	NEPAL	220	7069	MARLOX	243
0410	MONZHA WOMAN	199	5090	NORWAY	219	8088	VETA	239
0421	MONTMELO	199	5091	NORWAY WOMAN	219	8380	KERCUS	24
0427	IMOLA	190	5092	OSLO	208	8381	GISKAN	26
0428	IMOLA WOMAN	190	5093	OSLO WOMAN	208	8382	ULMUS	20
0430	ESTORIL	190	5094	FINLAND	219	8383	CERYSON	22
0431	ESTORIL WOMAN	190	5095	FINLAND WOMAN	219	8384	NOBOA	28
0432	ESTORIL L/S	203	5096	SAFETY	98	8385	VITINJA	16
0458	BETTER	231	5161	SOFIA L/S	154	8386	SALT	40
1048	KUGAR	237	5200	ISLAND	228	8387	PEARL	38
1070	CLASICA	206	5201	SITKA	227	8388	BRAX	30
1090	BOX	230	5202	SITKA WOMAN	227	8389	IRON	32
1095	HIMALAYA	212	5503	AIFOS	153	8390	ROCK	34
1108	YUKON	222	5504	AIFOS L/S	154	8391	LUA	36
1109	ANETO	207	5505	MOSCU WOMAN	157	8392	ONYX	14
1117	TELENO	206	5506	MOSCU	157	8393	OPAL	41
1120	MINSK	220	5507	OXFORD	159	8394	GARNET	18
1189	RICAL	241	5707	EMIN	222	8395	RUBY	18
1193	VUREN	241	6414	NEW ARTIC	212	8396	BASALT	42
1194	KUNES	243	6415	NEW ARTIC WOMAN	212	8397	BERYL	12
1195	LUCIANE	212	6416	NEW BELLAGIO	211	8400	VITARA	91
1199	NEVADA	211	6428	SIBERIA	216	8401	JIMMY	109
1204	POINTER	202	6432	ANTARTIDA	215	8402	RAPTOR	107
1217	EXTREME	202	6433	ANTARTIDA WOMAN	215	8403	ROVER	138
1218	EXTREME WOMAN	202	6435	RUDOLPH	216	8404	ROVER L/S	138
1219	SHIBA	202	6436	NEBRASKA	215	8405	EXPLORER	162
1234	SAIPAN	241	6437	NEBRASKA WOMAN	215	8406	EXPLORER WOMAN	162
1236	PATRIK	236	6438	QUEBEC	211	8407	DAILY WOMAN STRETCH	101
1248	DAGA	240	6439	ULAN	207	8408	TROOPER	118
1256	RUPER	243	6441	WOS	197	8409	TAHOE	118
1282	ISBUD	234	6502	DOGO PREMIUM	184	8410	SAMURAI	112
1354	BRUNEN	237	6503	SAMOYEDO	184	8411	EXPEDITION	112
1394	DECKER	239	6523	TECKEL	187	8412	TERRANO	115
1470	FRED	234	6532	BELICE	188	8413	MAVERICK	115
1492	PURIA	240	6554	BEAGLE	187	8414	ARMADA	117
1521	MALONY	236	6597	BALI	187	8415	BROCK	168
1526	FENATI	237	6607	CENTAURO PREMIUM	194	8416	BROCK WOMAN	168
1549	RAYAN	237	6609	PEGASO PREMIUM	194	8417	HILUX	165
1557	VORO	240	6613	FLEXAR	230	8418	HILUX WOMAN	165
1559	LARSON	240	6617	PRINCE	193	8420	VIVARO	166
1630	RAZER	238	6618	PRINCE WOMAN	193	8421	SIAN	87
1631	ROSMAL	235	6627	JAMAICA	187	9004	NANUK	235
1720	OZARK	243	6629	MONTREAL	197	9005	RINGO	91
1773	NUMAN	240	6632	AUSTRAL	196	9009	PLANET	235
1783	HOBART	236	6634	STAR WOMAN	196	9081	DARAK	242
1813	AYORA	235	6635	ESTRELLA L/S	204	9082	MACIL	130
1815	KENIA	235	6636	ESTRELLA WOMAN L/S	204	9083	ATALA	142
1838	DONKER	236	6638	STAR	196	9084	FEROX WOMAN	124
1866	DAKOTA	236	6644	PEGASO WOMAN PREMIUM	194	9085	FEROX	124
1883	OREGON	236	6646	VICTORIA	188	9086	FIBER	126
1891	PINGUX	241	6660	FOX	188	9087	CARE	129
2009	NUKKA	235	6661	FOX WOMAN	188	9088	ROCHAT	144
3990	GOLIAT	240	6681	STAFFORD	184	9090	LAGASSE	142
3991	BRICO	239	6683	CAPRI	184	9091	ARZAK	141
4075	MERLOT	241	6689	HUSKY	189	9092	MEDERI	141

9093	VACCINE WOMAN	130
9094	VACCINE	130
9097	VADEMECUM	129
9098	PANACEA	129
9100	DAILY	97
9102	PINTOR	94
9105	ALDANY	132
9106	RITZ	173
9107	HILTON	173
9108	PROTECT	98
9109	PATROL	94
9110	BONATI	231
9111	VENERA	88
9118	DAILY WOMAN	97
9123	CLASSIC	176
9124	MINI	176
9125	BENOIT	179
9126	BATALI	177
9127	DACOSTA	176
9128	RAMSAY	179
9129	DUCASSE	179
9139	BOST	179
9145	BEVERLY	171
9146	BEVERLY WOMAN	171
9200	DAILY NEXT	95
9205	DAILY STRETCH	101
9206	FONTA	106
9207	WALL	103
9250	WAITER	174
9251	WAITRESS	174
9300	NAOS	71
9301	SOAN	71
9302	POLARIS	54
9303	ANTARES	58
9304	EPSYLON	61
9305	ALTAIR	59
9306	POLARIS L/S	55
9307	DAILY HV	67
9309	ALFA	67
9310	DELTA	54
9311	POLUX	62
9312	ENIX	68
9313	PERSEI	56
9314	SPICA	58
9315	VEGA	53
9316	VEGA L/S	53
9317	TAURI	50
9318	ATRIO	50
9319	ATRIO L/S	51
9320	MERAK	61
9321	ENIX	68
9323	BETA	62
9324	FORAN	49
9325	FORAN L/S	49
9326	WARMOR	104
9327	KUTTA	87
9328	LADA	65
9400	RANGER	81
9401	DEFENDER	79
9402	SANTANA	79
9403	CRUISER	81
9404	BLAZER	83



ALPHABETICAL INDEX_

AIFOS	5503	153
AIFOS L/S	5504	154
ALDANY	9105	132
ALFA	9309	67
ALMANZOR	5067	88
ALTAIR	9305	59
AMAZONAS	6715	91
AMERICA	5072	224
AMERICA WOMAN	5073	224
ANETO	1109	207
ANTARES	9303	58
ANTARTIDA	6432	215
ANTARTIDA WOMAN	6433	215
ARMADA	8414	117
ARMOUR	6725	90
ARZAK	9091	141
ATALA	9083	142
ATRIO	9318	50
ATRIO L/S	9319	51
AUSTRAL	6632	196
AYORA	1813	235
BAHRAIN	0407	191
BAHRAIN WOMAN	0408	191
BALDER	7033	234
BALI	6597	187
BASALT	8396	42
BATALI	9126	177
BEAGLE	6554	187
BELICE	6532	188
BENOIT	9125	179
BERYL	8397	12
BETA	9323	62
BETTER	0458	231
BEVERLY	9145	171
BEVERLY WOMAN	9146	171
BLAZER	9404	83
BONATI	9110	231
BOST	9139	179
BOX	1090	230
BRAX	8388	30
BRICO	3991	239
BROCK	8415	168
BROCK WOMAN	8416	168
BRUNEN	1354	237
CAPRI	6683	184
CARE	9087	129
CARPE	5009	204
CENTAURO PREMIUM	6607	194
CERYSON	8383	22
CLASICA	1070	206
CLASSIC	9123	176
CRUISER	9403	81
DABIZ	4500	150
DACOSTA	9127	176
DAGA	1248	240
DAILY	9100	97
DAILY HV	9307	67
DAILY NEXT	9200	95
DAILY STRETCH	9205	101
DAILY STRETCH HV	9312	68
DAILY WOMAN	9118	97
DAILY WOMAN STRETCH	8407	101
DAKOTA	1866	236
DARAK	9081	242
DECKER	1394	239
DEFENDER	9401	79

DELTA	9310	54
DOGO PREMIUM	6502	184
DOME	6704	223
DONKER	1838	236
DUCASSE	9129	179
EMIN	5707	222
ENIX	9321	68
EPSYLON	9304	61
ERIS	7019	234
ESCOCIA	5074	228
ESTORIL	0430	190
ESTORIL L/S	0432	203
ESTORIL WOMAN	0431	190
ESTRELLA L/S	6635	204
ESTRELLA WOMAN L/S	6636	204
EXPEDITION	8411	112
EXPLORER	8405	162
EXPLORER WOMAN	8406	162
EXTREME	1217	202
EXTREME WOMAN	1218	202
FENATI	1526	237
FEROX	9085	124
FEROX WOMAN	9084	124
FIBER	9086	126
FINLAND	5094	219
FINLAND WOMAN	5095	219
FLEXAR	6613	230
FONTA	9206	106
FORAN	9324	49
FORAN L/S	9325	49
FOX	6660	188
FOX WOMAN	6661	188
FRED	1470	234
GARNET	8394	18
GISKAN	8381	26
GOLIAT	3990	240
HILTON	9107	173
HILUX	8417	165
HILUX WOMAN	8418	165
HIMALAYA	1095	212
HOBART	1783	236
HUSKY	6689	189
HUSKY WOMAN	6691	189
IMOLA	0427	190
IMOLA WOMAN	0428	190
IRON	8389	32
ISBUD	1282	234
ISLAND	5200	228
JAMAICA	6627	187
JIMMY	8401	109
KENIA	1815	235
KERCUS	8380	24
KUGAR	1048	237
KUNES	1194	243
KUTTA	9327	87
LADA	9328	65
LAGASSE	9090	142
LARSON	1559	240
LEIRE	0405	230
LOCK	0108	238
LUA	8391	36
LUCIANE	1195	212
LUJAN	6706	160
LUJAN WOMAN	6707	160
MACIL	9082	130
MAKALU	5079	220

MALONY	1521	236
MARLOX	7609	243
MAVERICK	8413	115
MEDERI	9092	141
MERAK	9320	61
MERLOT	4075	241
MINI	9124	176
MINSK	1120	220
MONTMELO	0421	199
MONTREAL	6629	197
MONZHA	0404	199
MONZHA WOMAN	0410	199
MOSCU	5506	157
MOSCU WOMAN	5505	157
NANUK	9004	235
NAOS	9300	71
NEBRASKA	6436	215
NEBRASKA WOMAN	6437	215
NEPAL	5080	220
NEVADA	1199	211
NEW ARTIC	6414	212
NEW ARTIC WOMAN	6415	212
NEW BELLAGIO	6416	211
NIVUS	6703	92
NOBOA	8384	28
NORWAY	5090	219
NORWAY WOMAN	5091	219
NUKKA	2009	235
NUMAN	1773	240
ONYX	8392	14
OPAL	8393	41
OREGON	1883	236
OSLO	5092	208
OSLO WOMAN	5093	208
OXFORD	5507	159
OXFORD WOMAN	5068	159
OZARK	1720	243
PANACEA	9098	129
PANEL	7008	234
PATRIK	1236	236
PATROL	9109	94
PEARL	8387	38
PEGASO PREMIUM	6609	194
PEGASO WOMAN PREMIUM	6644	194
PERSEI	9313	56
PICK	0106	238
PINGUX	1891	241
PINTOR	9102	94
PLANET	9009	235
POINTER	1204	202
POLARIS	9302	54
POLARIS L/S	9306	55
POLUX	9311	62
PRIME	0365	231
PRINCE	6617	193
PRINCE WOMAN	6618	193
PROTECT	9108	98
PURIA	1492	240
QUEBEC	6438	211
RAMSAY	9128	179
RANGER	9400	81
RAPTOR	8402	107
RAYAN	1549	237
RAZER	1630	238
RICAL	1189	241
RINGO	9005	91

RITZ	9106	173
RIVET	0105	238
ROCHAT	9088	144
ROCK	8390	34
ROSMAL	1631	235
ROVER	8403	138
ROVER L/S	8404	138
RUBY	8395	18
RUDOLPH	6435	216
RUPER	1256	243
SAFETY	5096	98
SAIPAN	1234	241
SALT	8386	40
SAMOYEDO	6503	184
SAMURAI	8410	112
SANTANA	9402	79
SHIBA	1219	202
SIAN	8421	87
SIBERIA	6428	216
SIRIO	5063	63
SITKA	5201	227
SITKA WOMAN	5202	227
SOAN	9301	71
SOFIA	5061	153
SOFIA L/S	5161	154
SPICA	9314	58
STAFFORD	6681	184
STAR	6638	196
STAR WOMAN	6634	196
TAHOE	8409	118
TAMIL	0402	200
TAMIL WOMAN	0409	200
TAURI	9317	50
TECKEL	6523	187
TELENO	1117	206
TERRANO	8412	115
TORMO	0400	200
TORMO WOMAN	0401	200
TROOPER	8408	118
TURNER	4127	239
ULAN	6439	207
ULMUS	8382	20
URANUS	7041	234
VACCINE	9094	130
VACCINE WOMAN	9093	130
VADEMECUM	9097	129
VEGA	9315	53
VEGA L/S	9316	53
VENERA	9111	88
VETA	8088	239
VICTORIA	6646	188
VITARA	8400	91
VITINJA	8385	16
VIVARO	8420	166
VORO	1557	240
VUREN	1193	241
WAITER	9250	174
WAITRESS	9251	174
WALL	9207	103
WARMOR	9326	104
WOS	6441	197
YUKON	1108	222



NEW KUTA & SIAN

PG_87





NEW PRODUCTS

COLOUR CHART_



Fluor



221 Fluor Yellow 223 Fluor Orange 234 Fluor Coral 125 Fluor Pink Lady 228 Fluor Coral 176 Fluor Turquoise 222 Fluor Green

Heather



013 Heather White 177 Ash White Melange 39 Heather Mustard 245 Heather Red 256 Heather Garnet 602 Charcoal Red Heather 248 Heather Royal 255 Heather Denim
 247 Heather Navy Blue 246 Heather Turquoise 693 Heather Mantis Green 257 Heather Bottle Green 153 Heather Military Green 243 Heather Black

Prints



166 Botanic Print 173 Geometric Print 174 Houndstooth Print 143 Blue Jeans

The colours shown in this catalogue are an approximate and as accurate as possible representation of the actual product colours, within the limitations of colour printing on textile materials. In addition, due to continuous product improvement and stock updates, some colours or features may change without being reflected in this document. Claims based on the colours displayed in this catalogue will not be accepted. ROLY reserves the right to change the colours of the products shown in this catalogue without prior notice.





GRAVA
32





oficinadimagem.pt